



KING LIFTING

Tel: 0117 982 1121
www.kinglifting.co.uk



SPECIFICATION GUIDE

'BIG ENOUGH TO COPE, SMALL ENOUGH TO CARE'

INTRODUCTION

AFTER NEARLY 3 DECADES OF PROVIDING EXCELLENT SERVICE AND VALUE FOR MONEY, KING LIFTING IS TODAY THE LEADING CRANE HIRE, HEAVY LIFT, MACHINERY MOVEMENT AND TRANSPORT SPECIALIST IN THE UNITED KINGDOM.

Operating an extensive and modern fleet of vehicles & equipment from a network of depots across the UK, has always allowed King Lifting to meet and exceed customers expectations. The fleet includes all-terrain and city class cranes, mobile and pedestrian operated tower cranes together with semi low & low loaders, flatbed vehicles fitted with lorry loaders and highly specialised plant & machinery movement equipment.



The accreditation of our Quality Management System to BS EN ISO 9001:2001 is not only a sign of the company's effectiveness but is a guarantee of consistently high standards of service.



King Lifting as an Environmentally Friendly company operate an Environment Management System which complies to the requirements of BS EN ISO 14001:2004.

We are members of the Construction Plant-hire Association Freight Transport Association are a CPCS Construction Plant Competence Scheme accredited Test Centre and maintain both internal and external consultants to assist with all aspects of Health and Safety, Environmental and Employment Law.

At King Lifting we are totally committed to ensuring the safety of our customers, employees and the public. We continue to promote a safety culture and invest in the highest levels of training and equipment for all our employees.

If you choose to undertake the lifting operations on a CPA Crane Hire only basis, 'BS 7121 - Safe Use of Cranes' and recommendations from the Health and Safety Executive place the responsibility of providing a suitably qualified and experienced Appointed Person on the customer. The Appointed Person is responsible for planning the lift and preparing the necessary method statement and risk assessments prior to the commencement of the lifting operation.

In this high risk industry King Lifting recommend that customers who are not experienced in hiring cranes and therefore not aware of the responsibilities, duties and risks involved, take advantage of our CPA Contract Lift service.





KING LIFTING

DEPOTS



BRISTOL DEPOT

Third Way, Avonmouth,
Bristol, BS11 9YL
T: 01179 821121 F: 01179 235762



NORTHAMPTON DEPOT

Cavalry Hill, Cavalry Hill Industrial Park,
Weedon, Northampton, NN7 4PP
T: 01327 342180 F: 01327 342764



SOUTHAMPTON DEPOT

Unit G3, Oceanic Way, Marchwood Industrial
Park, Marchwood, Southampton, SO40 4BD
T: 02380 661384 F: 02380 661494



SOUTH WALES DEPOT

Tir-y-berth Industrial Est, Tir-y-berth,
Hengoed, Mid Glamorgan, CF82 8AU
T: 01443 812457 F: 01443 814143



SWINDON DEPOT

Darby Close, Cheney Manor Industrial Est,
Swindon, SN2 2PN
T: 01793 542740 F: 01793 514837



WEST LONDON DEPOT

Stockley Farm Road, Stockley Park,
West Drayton, UB7 9BW
T: 01895 446443 F: 01895 446449



EAST LONDON DEPOT

Albion Parade, Canal Basin, Gravesend,
Kent, DA12 2RN
T: 01474 321721 F: 01474 321821



YEovil DEPOT

Westlands, Lysander Road, Yeovil, BA20 2YB
T: 07778 879606 F: 01935 704843



'BIG ENOUGH TO COPE, SMALL ENOUGH TO CARE'

KING LIFTING LIMITED

HEAD OFFICE: King Road Avenue Avonmouth Bristol BS11 9HF
Tel: 01179 821121 Fax: 01179 826244 Web: www.kinglifting.co.uk

DEPOTS ACROSS THE UK

CAUTION

**UNLESS YOU UNDERSTAND
THE REQUIREMENTS
CONTAINED IN THIS
GUIDE, WE WOULD
RECOMMEND
YOU CHOOSE A
CONTRACT LIFT.**



DISCLAIMER

The configurations and duties for the cranes included in this specification are too numerous to include fully. The charts that have been included have been reproduced from manufacturer specifications, and while every effort has been made to ensure their accuracy, we do not accept any responsibility for errors or omissions.

We also need to draw your attention to the guidance notes to assist you with your crane selection.

All aspects of this document are for guidance purposes only.

If you have any queries regarding the content or you require more extensive specifications please contact your nearest depot or alternatively the **technical department on 0117 982 1121.**

CONTENTS

INTRODUCTION

CONTENTS

SPECIALISED EQUIPMENT

CAPACITY	SPECIALISED EQUIPMENT
3000kg	Caterpillar VC60E Forklift @ 500mm
5000kg	Caterpillar VC110F Forklift @ 500mm
5500kg	Mitsubishi FGC55K Forklift @ 600mm
6050kg	Caterpillar T150D Forklift @ 600mm
7000kg	Hyster Spacesaver S7.00XL Forklift @ 600mm
15880kg	Versa-Lift 25/35 @ 610mm Extended Ballast
27300kg	Versa-Lift 40/60 @ 915mm Extended Ballast
100te	Power Lift System
3te	Maeda Compact Crane MC285CRM(E)
5te	Maeda Mini Crawler LC785



KING LIFTING

SPECIALISED EQUIPMENT

King Lifting can provide specialised solutions for your installations and lifting problems.



Versa Lifts

Can move large machine tools quickly without removing guards, cutting costly downtime.



Power Lift Gantry Systems

Enabling the movement of machinery with restricted headroom.



Compact Cranes

A new technology at only 750mm wide able to enter a premises through a doorway then lift 2.82t, with a max radius of 8.2m and height 8.7m.



Mini Crawler Cranes

With full 360° rotation, pick and carry duties and almost no tail-swing these tracked cranes are ideal for urban, small scale and phased developments.



Lifting Equipment

King Lifting have a range lifting equipment for hire, including modular lifting beams upto 100t capacity, manbaskets, boat slings, outrigger mats etc.



'BIG ENOUGH TO COPE, SMALL ENOUGH TO CARE'

KING LIFTING LIMITED

HEAD OFFICE: King Road Avenue Avonmouth Bristol BS11 9HF
Tel: 01179 821121 Fax: 01179 826244 Web: www.kinglifting.co.uk

DEPOTS ACROSS THE UK









KING LIFTING

PLANT AND MACHINERY MOVEMENT

King Lifting are focused on delivering safe, practical and efficient solutions to all of your plant and machinery moving requirements, allowing you to keep any down time and other inconveniences to an absolute minimum.

Our team consists of skilled labour who have access to the latest specialised handling equipment including Versalifts, Compact Cranes, Powerlift Gantry Systems and our own fleet of Mobile Cranes.

-  Single machine moves
-  Factory removals
-  Internal relocations
-  Mechanical and Electrical Installations
-  Contract Lifts
-  Lorry loader and specialist transport



'BIG ENOUGH TO COPE, SMALL ENOUGH TO CARE'

KING LIFTING LIMITED

HEAD OFFICE: King Road Avenue Avonmouth Bristol BS11 9HF
Tel: 01179 821121 Fax: 01179 826244 Web: www.kinglifting.co.uk

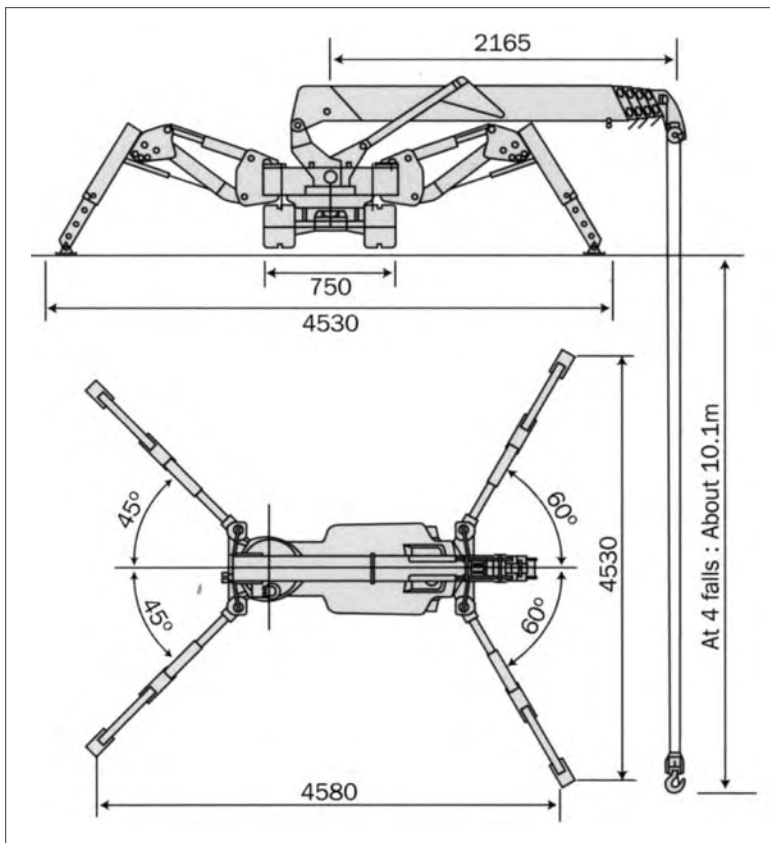
DEPOTS ACROSS THE UK

MAEDA COMPACT CRANE MC285CRM(E)

DIMENSIONS

3 Tonne

Crane



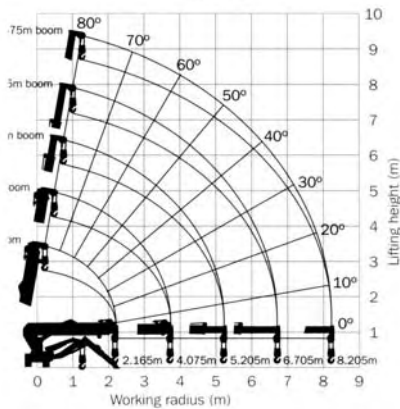
Vehicle weight	1900kg
----------------	--------

MAEDA COMPACT CRANE MC285CRM(E)

MAIN BOOM

Radius (m)	Main Boom			
	Total rated load (kg) (outriggers at maximum position)			
	4,075 Boom	5,575 Boom	7,075 Boom	8,575 Boom
<4,0				550
<3,6			820	
<3,0		1220		
<1,4	2820			
1,5	2520			
2,0	1920			
2,5	1570			
3,0	1220			
3,5	970	970		
3,705	920			
4,0		780	740	
4,5		630	580	400
5,0		530	480	340
5,205		530		
5,5			430	300
6,0			380	270
6,5			350	230
6,705			330	
7,0				200
7,5				180
8,0				150
8,205				150

WORKING RANGE CHART



The working range chart applies to cases without load and does not include boom deflections.

3 Tonne

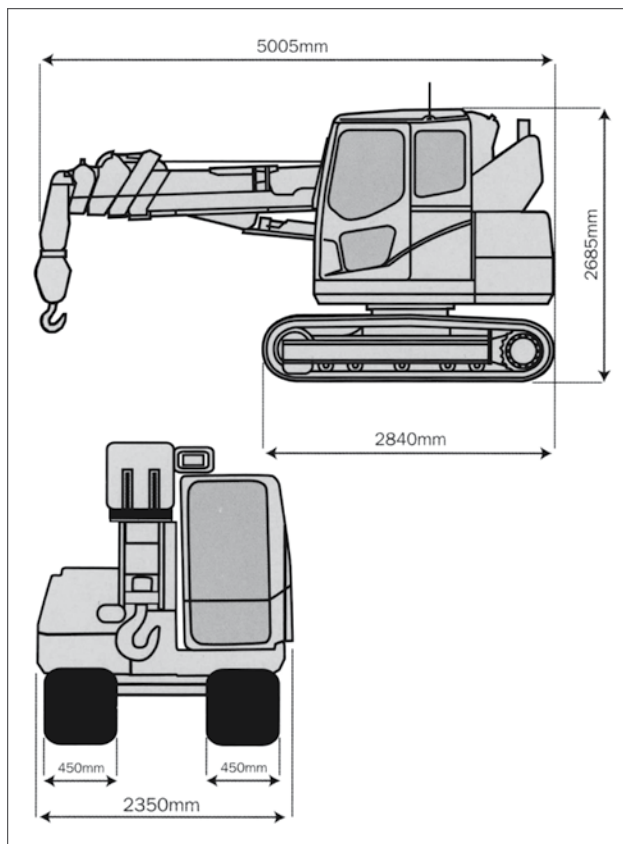
Crane

MAEDA MINI CRAWLER LC785

DIMENSIONS

5 Tonne

Crane



Vehicle weight	9,700kg
----------------	---------

MAEDA MINI CRAWLER LC785

MAIN BOOM

Radius (m)	Main Boom				
	Total rated load (kg)				
	4,63m	7,38m	10,13m	12,88m	15,63m
2,0	4900	4900	2600	2000	
2,5	3800	3760	2600	2000	1400
3,0	2900	2980	2310	2000	1400
3,5	2290	2420	2010	1890	1400
4,0		2000	1750	1650	1400
4,5		1670	1530	1450	1320
5,0		1400	1340	1280	1200
6,0		1000	1030	1010	990
7,0			780	800	820
8,0			580	630	680
9,0			410	500	560
10,0				390	450
11,0				300	360
12,0					280
13,0					210
14,0					200
14,52					200

Radius (m)	Pick & Carry Duties		
	Total rated load (kg)		
	4,63m	7,38m	10,13m
2,0	2000	2000	1400
2,5	2000	2000	1400
3,0	1670	1700	1360
3,5	1330	1380	1170
4,0		1140	1020
4,5		960	890
5,0		810	770
5,5		690	680
6,0		590	590
6,27		540	550
6,5			510
7,0			440
7,5			380
8			320
8,5			270
9,0			230
9,02			230

5 Tonne

Crane

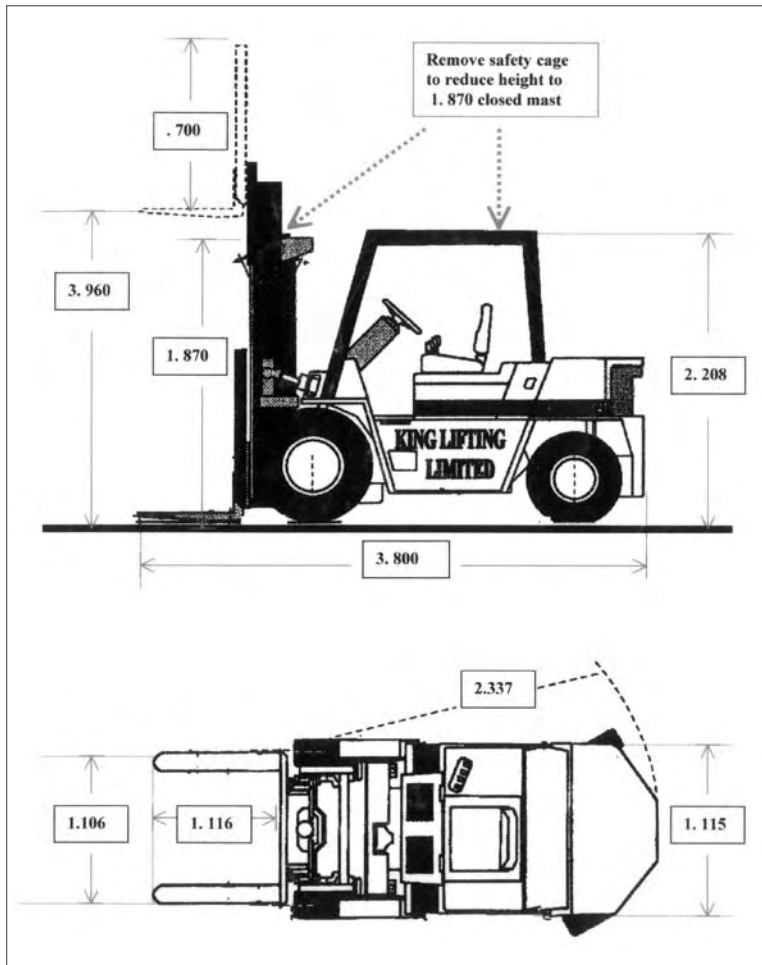
CATERPILLAR VC60E

DIMENSIONS

Forklift at 500mm Gas Powered

3000 KG

Equipment



TECHNICAL SPECIFICATION

Capacity	3000kg
Weight	4576kg

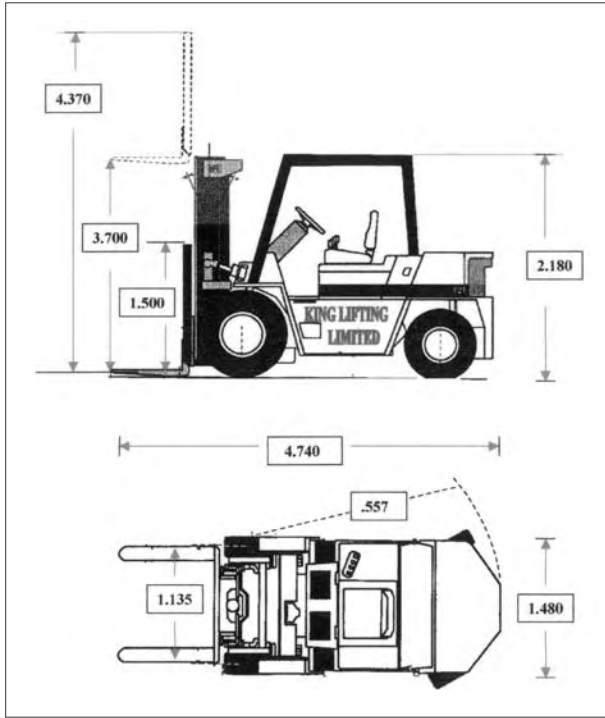


The charts that have been included have been reproduced from manufacturer specifications, and while every effort has been made to ensure their accuracy, we do not accept any responsibility for errors or omissions. We also need to draw your attention to the guidance notes on page iv to assist you with your crane selection.

CATERPILLAR VC110F

DIMENSIONS

Forklift at 500mm Gas Powered

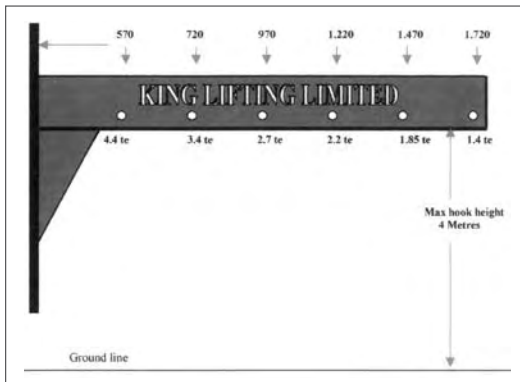


5000 KG

Equipment

FORKLIFT CRANE ARM ATTACHMENT

TECHNICAL SPECIFICATION



Capacity	5000kg
Weight unladen	7,200kg



The charts that have been included have been reproduced from manufacturer specifications, and while every effort has been made to ensure their accuracy, we do not accept any responsibility for errors or omissions. We also need to draw your attention to the guidance notes on page iv to assist you with your crane selection.

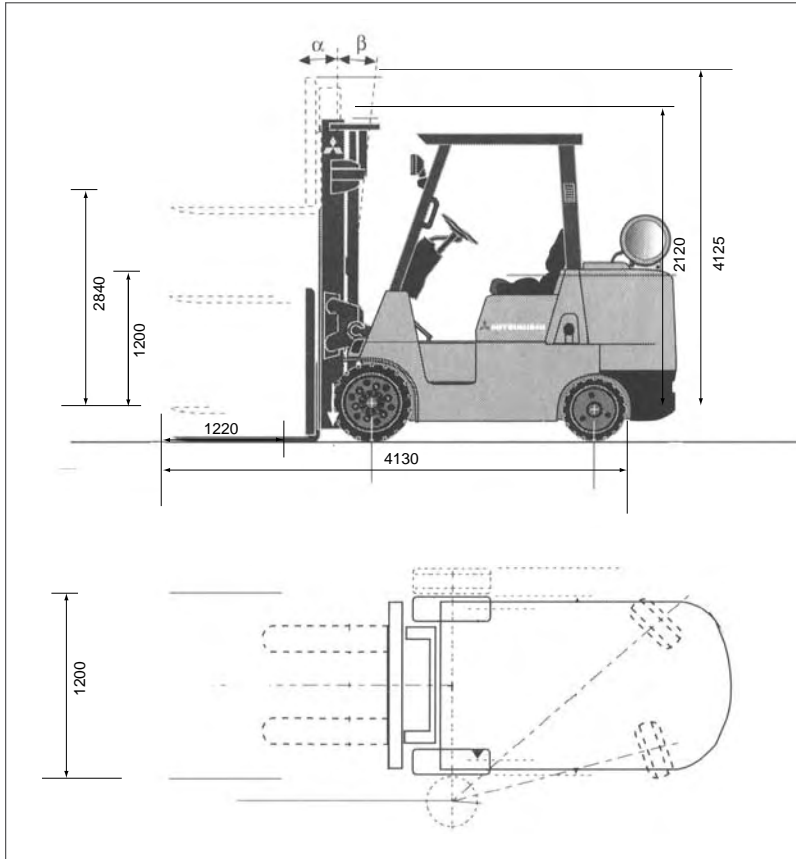
MITSUBISHI FGC55K

DIMENSIONS

Forklift at 600mm LP Gas Powered

5500 KG

Equipment



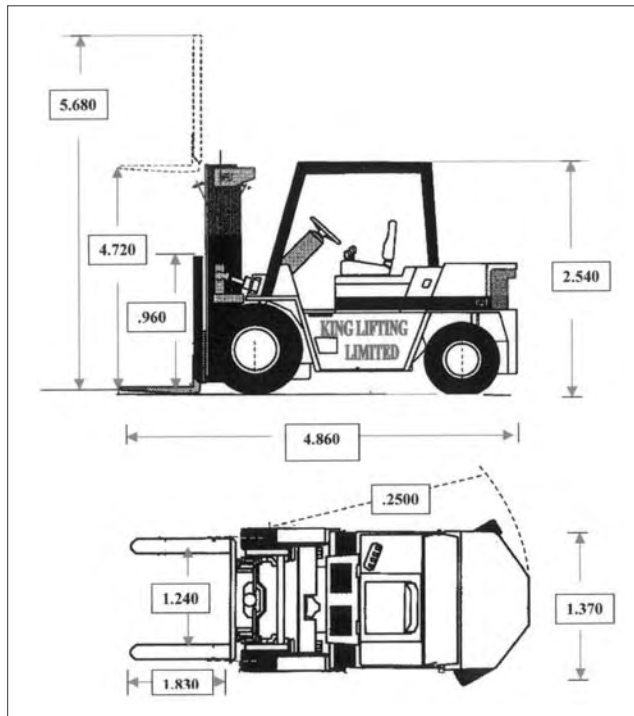
TECHNICAL SPECIFICATION

Capacity	5500kg
Weight	7200kg

CATERPILLAR T150D

DIMENSIONS

Forklift at 600mm Gas Powered



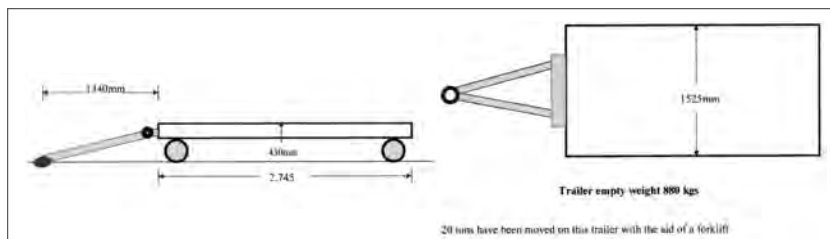
6050 KG

Equipment

TECHNICAL SPECIFICATION

Capacity	6050kg/600mm
Weight unladen	9,800kg

LOW BED TRAILER



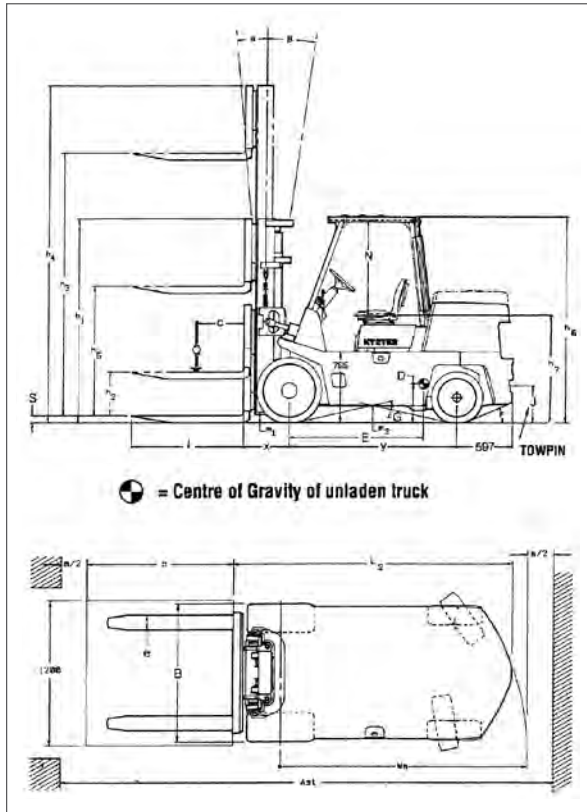
The charts that have been included have been reproduced from manufacturer specifications, and while every effort has been made to ensure their accuracy, we do not accept any responsibility for errors or omissions. We also need to draw your attention to the guidance notes on page iv to assist you with your crane selection.

HYSTER SPACESAVER S7.00XL

DIMENSIONS

Forklift at 600mm

7000 KG
Equipment



TECHNICAL SPECIFICATION

Capacity	7000kg
Weight unladen	9265kg

LOAD CENTRE

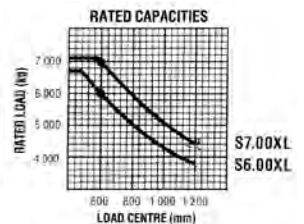
Distance from front of forks to centre of gravity of load.

RATED LOAD

Based on vertical masts as shown left.

$Asl = Wa + x + b + a$ (see line 23)
 a = Minimum operating clearance
 (V.D.I. standard = 200 mm BITA recommendation = 300 mm)

	Load Moment cm-kg	Dimensions in mm						
		D	E	F	G	J	K	N
S6.00XL	660 000	665	1 100	23°	25°	390	765	1 025
S7.00XL	770 000	805	1 140	23°	25°	390	765	1 025



VERSA-LIFT 25/35

25/35 VERSA-LIFT WITH 3 COUNTERWEIGHTS

Slab Weight (kg)	Number of Slabs	Standard Wheel Base (mm)
880	3	1930

Lifting Capacities w/Forks Only (kgs)					
		Counterweight Extensions (mm)			
		0	300	600	900
Load Center From Fork Face (mm)	600	11100	12800	14600	16300
	900	8900	10300	11700	13000
	1200	7400	8600	9700	10900
	1500	6300	7300	8300	9300
	1800	5600	6400	7300	8100
	2100	4900	5700	6500	7200

Lifting Capacities w/Boom Only (kgs)					
		Counterweight Extensions (mm)			
		0	300	600	900
Load Center From Boom Face (mm)	300	10700	12400	14200	15900
	600	8600	9900	11300	12700
	900	7100	8300	9400	10600
	1200	6100	7100	8100	9100
	1500	5400	6200	7100	7900
	1800	4800	5500	6300	7100
	2100	4300	5000	5700	6400
	2400	3900	4500	5200	5800

Lifting Capacities w/Fork and Boom (kgs)					
		Counterweight Extensions (mm)			
		0	300	600	900
Load Center From Boom Face (mm)	600	8100	9500	10900	12300
	900	6800	7900	9100	10200
	1200	5800	6800	7800	8800
	1500	5100	5900	6800	7700
	1800	4500	5300	6100	6800
	2100	4100	4800	5400	6100
	2400	3700	4300	5000	5600

15880 KG

Equipment

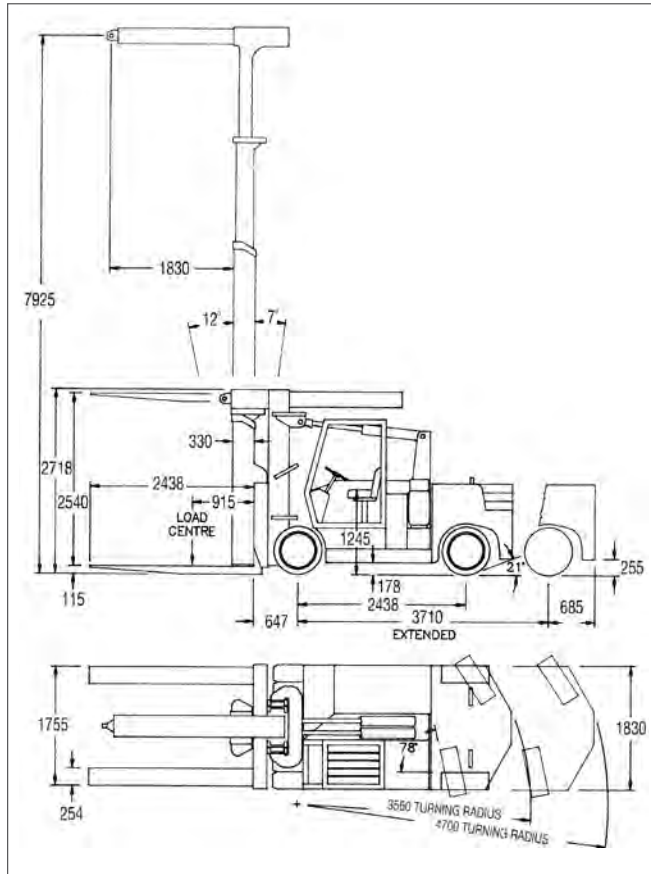


The charts that have been included have been reproduced from manufacturer specifications, and while every effort has been made to ensure their accuracy, we do not accept any responsibility for errors or omissions. We also need to draw your attention to the guidance notes on page iv to assist you with your crane selection.

VERSA-LIFT 40/60

DIMENSIONS

Forklift at 915mm extended ballast



27300 KG

Equipment

TECHNICAL SPECIFICATION

Capacity	Retracted	18t/915mm
	Extended	27t/915mm
Gradient	Empty	47%
	Loaded	20%
Tilt	Forward	12°
	Backward	7°
Weights	Total	26,315kg
	Boom	2,722kgs
	Counterweight	7,260kg
	Forks	1361kg

Drawbar Pull	Empty	6,216kgs
	Loaded	5,400kgs
Axle Weights	Steer Empty	14,065kg
	Drive Empty	12,250kg
	Steer Loaded	2,722kg
	Drive Loaded	50,817kg



The charts that have been included have been reproduced from manufacturer specifications, and while every effort has been made to ensure their accuracy, we do not accept any responsibility for errors or omissions. We also need to draw your attention to the guidance notes on page iv to assist you with your crane selection.

VERSA-LIFT 40/60

40/60 VERSA-LIFT WITH 3 COUNTERWEIGHTS

Slab Weight (kg)	Number of Slabs	Wheel Base (mm)
1700	4	2490

Lifting Capacities w/Forks Only (kgs)						
		Counterweight Extensions (mm)				
		0	300	600	900	1200
Load Center From Fork Face (mm)	900	18900	21000	23100	25200	27300
	1200	15800	17500	19300	21100	22900
	1500	13600	15100	16600	18100	19600
	1800	11900	13200	14600	15900	17200
	2100	10600	11800	13000	14100	15300

Lifting Capacities w/Boom Only (kgs)						
		Counterweight Extensions (mm)				
		0	300	600	900	1200
Load Center From Fork Face (mm)	600	18000	20000	22100	24200	26300
	900	15100	16800	18600	20300	22000
	1200	13000	14500	16000	17500	19000
	1500	11400	12700	14100	15400	16700
	1800	10200	11300	12500	13700	14900
	2000	9700	10700	11900	13000	14100
	2100	9200	10200	11300	12300	13400
	2300	8800	9700	10700	11800	12800
	2400	8300	9300	10300	11200	12200
	2600	8000	8900	9800	10800	11700
	2700	7700	8600	9400	10300	11200
	2900	7400	8200	9100	9900	10800
	3000	7100	7300*	7300*	7300*	7300*

Lifting Capacities w/Forks and Boom Only (kgs)						
		Counterweight Extensions (mm)				
		0	300	600	900	1200
Load Center From Fork Face (mm)	600	17400	19500	21500	23600	25700
	900	14600	16300	18000	19800	21500
	1200	12600	14100	15600	17000	18500
	1500	11000	12300	13600	15000	16300
	1800	9800	11000	12200	13300	14500

*** All load Capacities are Rated with the Mast Vertical.

*** Regions Marked by an * are Limited by Structural Limitations.

27300 KG

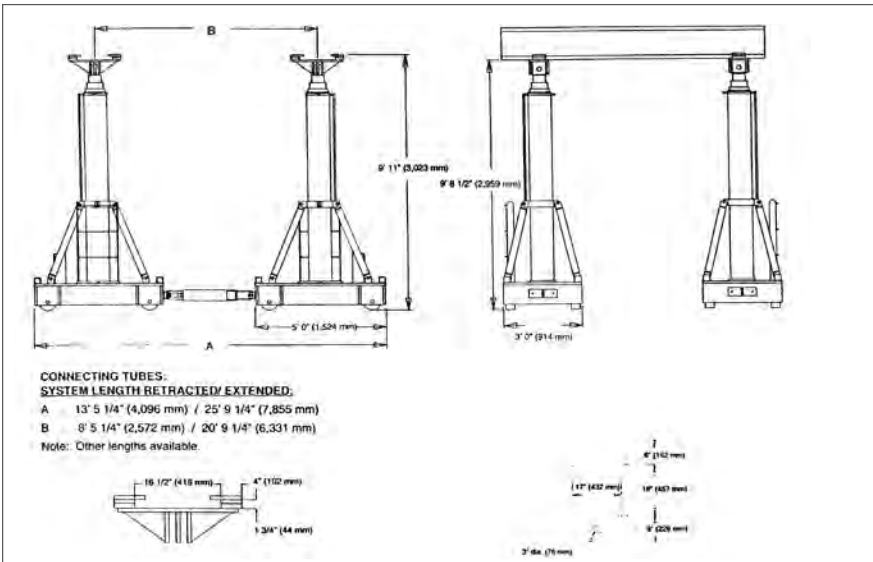
Equipment



The charts that have been included have been reproduced from manufacturer specifications, and while every effort has been made to ensure their accuracy, we do not accept any responsibility for errors or omissions. We also need to draw your attention to the guidance notes on page iv to assist you with your crane selection.

POWER LIFT SYSTEM

DIMENSIONS



100 Tonne

Equipment

MODEL 21A, 100 (91) TON 2 POINT LIFT SYSTEM HYDRAULIC CAPACITY CHART

CYLINDER STAGES

Pressure	1600	1450	1200	1000	800	600	400	200
21'5" (6,528 mm) 2nd Stage	85 (77) ton	69 (63) ton	57 (52) ton	48 (44) ton	38 (34) ton	29 (26) ton	19 (17) ton	10 (9) ton
15'7" (4,750 mm) 1st Stage		103 (93) ton	86 (77) ton	71 (64) ton	57 (52) ton	43 (39) ton	28 (25) ton	14 (13) ton

9'9" (2,972 mm) Standard (Metric)

MODEL 42A, 200 (181) TON 4 POINT LIFT SYSTEM HYDRAULIC CAPACITY CHART

CYLINDER STAGES

Pressure	1600	1450	1200	1000	800	600	400	200
21'5" (6,528 mm) 2nd Stage	171 (155) ton	139 (126) ton	114 (103) ton	95 (86) ton	76 (69) ton	57 (52) ton	38 (34) ton	19 (17) ton
15'7" (4,750 mm) 1st Stage		206 (187) ton	170 (154) ton	141 (128) ton	113 (103) ton	85 (77) ton	56 (51) ton	28 (25) ton

9'9" (2,972 mm) Standard (Metric)



The charts that have been included have been reproduced from manufacturer specifications, and while every effort has been made to ensure their accuracy, we do not accept any responsibility for errors or omissions. We also need to draw your attention to the guidance notes on page iv to assist you with your crane selection.



KING LIFTING

TRANSPORT

King Lifting Limited is one of the country's leading companies specialising in Crane Hire, Machinery Installation and Removal and Transport.

Our Low loader, Semi-low loader and flat bed vehicles, together with our fleet of lorry loader cranes are all operated by trained and fully competent personnel. We can lift, shift and transport your loads to any part of the UK or Europe, safety and securely.



Abnormal loads



Lorry loaders to 16t capacity



Low loaders to 150t capacity



Tautliner transport



'BIG ENOUGH TO COPE, SMALL ENOUGH TO CARE'

KING LIFTING LIMITED

HEAD OFFICE: King Road Avenue Avonmouth Bristol BS11 9HF
Tel: 01179 821121 Fax: 01179 826244 Web: www.kinglifting.co.uk

DEPOTS ACROSS THE UK

THE QUICK GUIDE TO NOTIFICATION ATTENDANT & MARKER REQUIREMENTS

MEASUREMENTS	NOTIFY POLICE	NOTIFY HIGHWAYS	ATTENDANT	MARKERS
WIDTH				
OVER 2.9m (9' 6")	YES	NO	NO	YES
OVER 305mm (1' 00") either side of Vehicle (See Note 2)	YES	NO	NO	YES
OVER 3.5m (11' 6")	YES	NO	YES	YES
OVER 5m (16' 5") VR1 required from DOT	YES	NO	YES	YES
OVER 6.1m (20' 0") Special Order required from DOT	YES	NO	YES	YES
LENGTH				
OVER 18.65M (61' 2") Rigid STGO 18.3m Rigid (See Note 4)	YES	NO	YES	NO
OVER 27.4m (89' 10 1/4") Rigid Special Order required from DOT	YES	NO	YES	NO
COMBINATION OVER 25.9m (84' 11 1/4") Tractor and Trailer(s)	YES	NO	YES	NO
PROJECTIONS - REAR				
OVER 1m (3' 3")	NO	NO	NO	NO (Make clearly visible)
OVER 2m (6' 6")	NO	NO	NO	YES (End)
OVER 3.05m (10' 0")	YES	NO	YES	YES (End and side)
OVER 5m (16' 5") Markers not more than 3.5m (11' 6") apart	YES	NO	YES	YES (End and both sides)
PROJECTIONS - FRONT				
OVER 2m (6' 6")	NO	NO	YES	YES (End and side)
OVER 3.05m (10' 0")	YES	NO	YES	YES (End and side)
OVER 4.5m (14' 9")	YES	NO	YES	YES (End and both sides)
WIDTH				
OVER C & U 10,170kgs (Axle)	NO	YES	NO	N/A
OVER 41,000kgs (See Note 6)	NO	YES	NO	N/A
OVER 41,000kgs but not over 46,000kgs (CAT 1)	NO	YES	NO	N/A
OVER 46,000kgs but not over 80,000kgs (CAT 2) maximum axle weight 12,500kgs (See Note 5)	NO	YES	NO	(1) 40MPH (2) 35MPH
OVER 80,000kgs but not over 150,000kgs (CAT 3)	YES	YES	NO	(1) 30MPH (2) 25MPH (3) 20MPH (4) 12MPH
OVER 150,000kgs at CAT 3 but Special Order required from DOT	YES	YES	NO	VARIOUS
MAXIMUM SPEED				

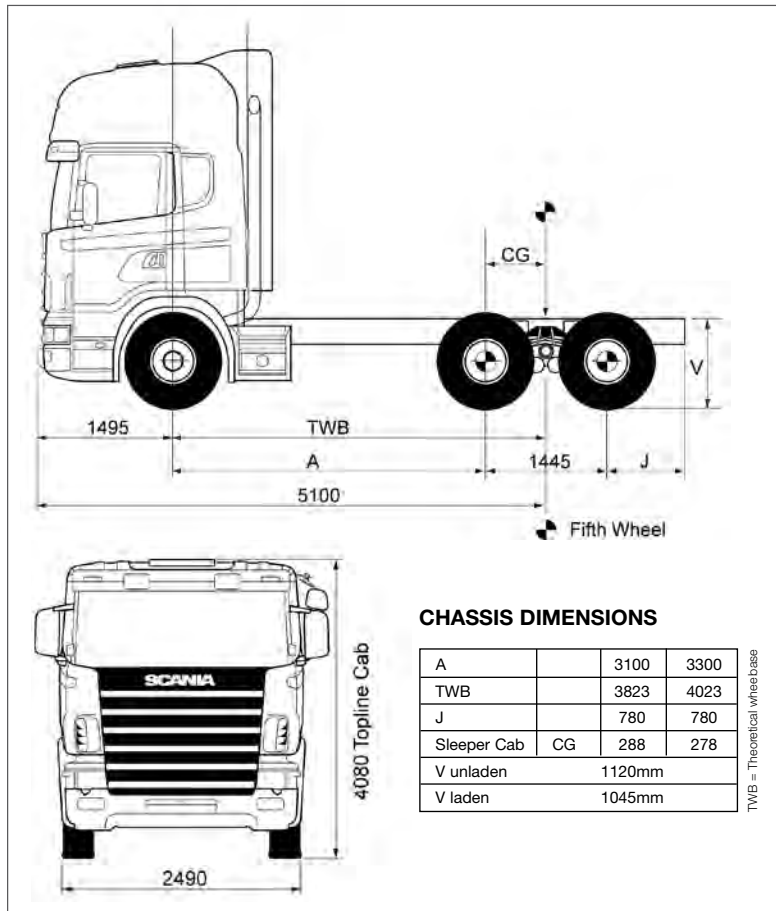


SCANIA R164 6X4 HEAVY HAULAGE TRACTOR

DIMENSIONS

150000kg GTW Heavy Haulage Tractor

150 Tonne
Transport



TECHNICAL SPECIFICATION

Vehicle weight	11,460kg
----------------	----------

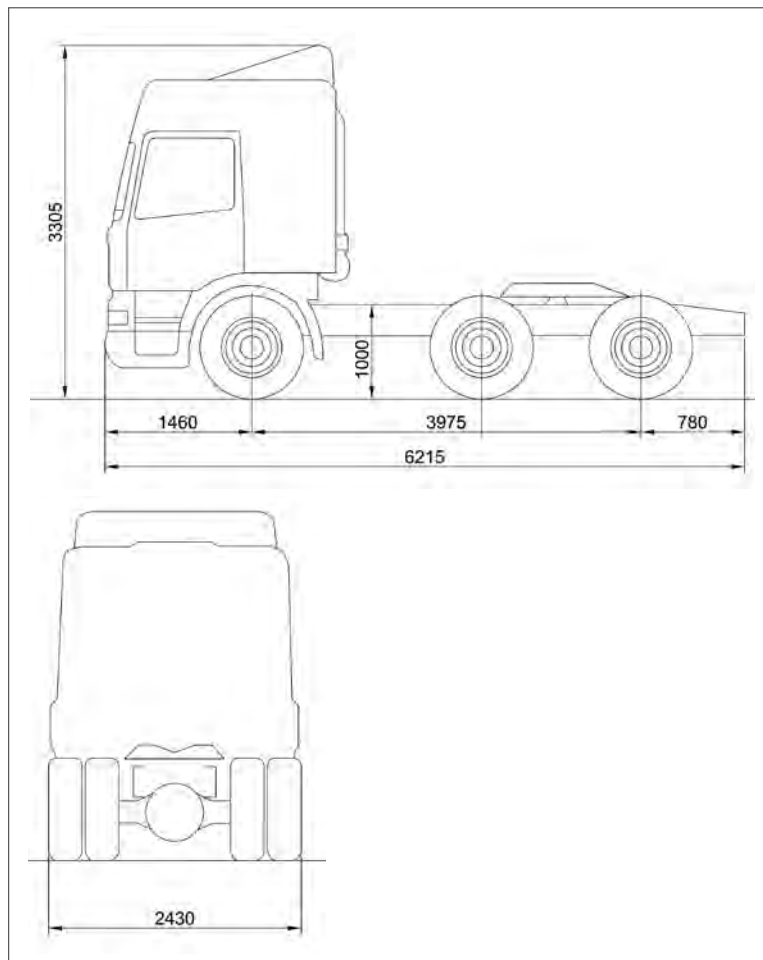


The charts that have been included have been reproduced from manufacturer specifications, and while every effort has been made to ensure their accuracy, we do not accept any responsibility for errors or omissions. We also need to draw your attention to the guidance notes on page iv to assist you with your crane selection.

SCANIA 6X4 HEAVY HAULAGE TRACTOR

DIMENSIONS

55000kg GTW Heavy Haulage Tractor



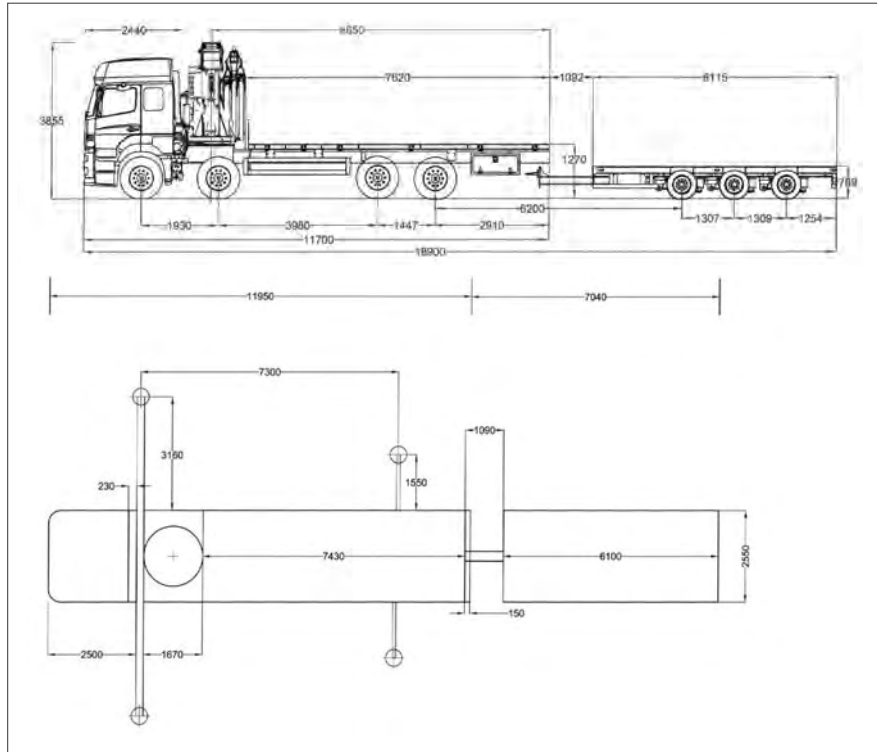
55 Tonne
Transport

TECHNICAL SPECIFICATION

Vehicle weight	8,520kg
----------------	---------

SCANIA 8X4 RIGID + FASSI S6600A CRANE + DRAG TRAILER

DIMENSIONS



TECHNICAL SPECIFICATION

Max. lifting capacity	16000kg @ 3.4m	3100kg @ 16.1m
Max. hydraulic outreach		16.1m
Slewing angle		400 ° continuous
Stabilizer spread		8880mm

	Solo	with Drag Trailer
Vehicle weight	21,780kg	26,200kg
Max payload	10,220kg	17,800kg

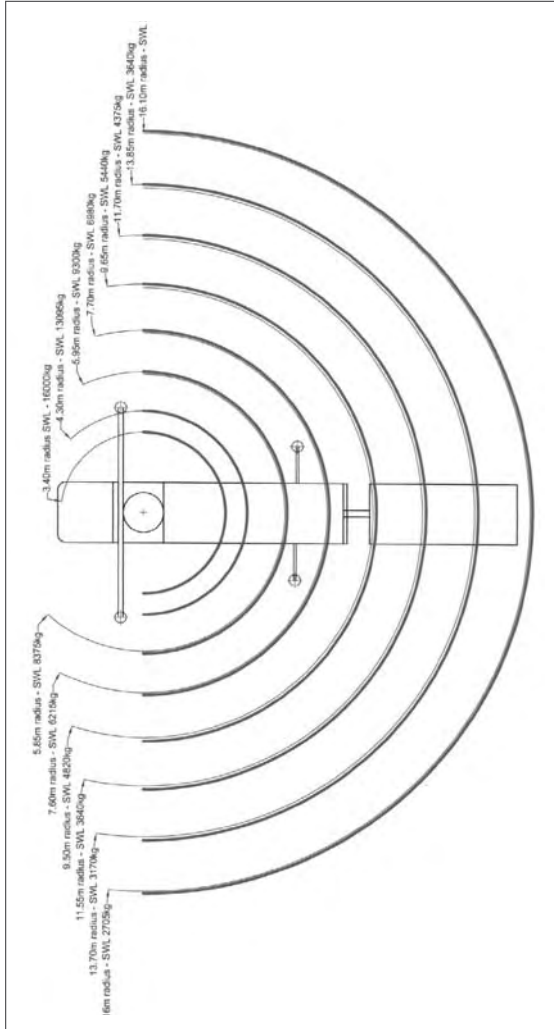


The charts that have been included have been reproduced from manufacturer specifications, and while every effort has been made to ensure their accuracy, we do not accept any responsibility for errors or omissions. We also need to draw your attention to the guidance notes on page iv to assist you with your crane selection.

Transport Lorry Loader 1/2

SCANIA 8X4 RIGID + FASSI S6600A CRANE + DRAG TRAILER

LORRY LOADER DUTIES (INCLUDING WINCH)



Transport Lorry Loader 1/2

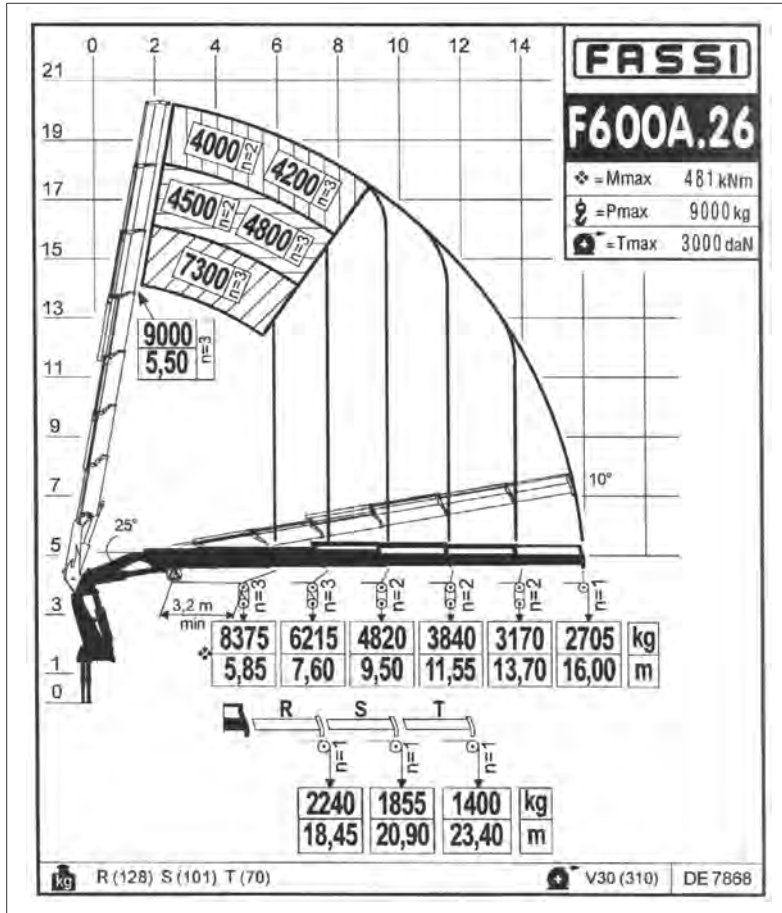


The charts that have been included have been reproduced from manufacturer specifications, and while every effort has been made to ensure their accuracy, we do not accept any responsibility for errors or omissions. We also need to draw your attention to the guidance notes on page iv to assist you with your crane selection.

SCANIA 8X4 RIGID + FASSI S6600A CRANE + DRAG TRAILER

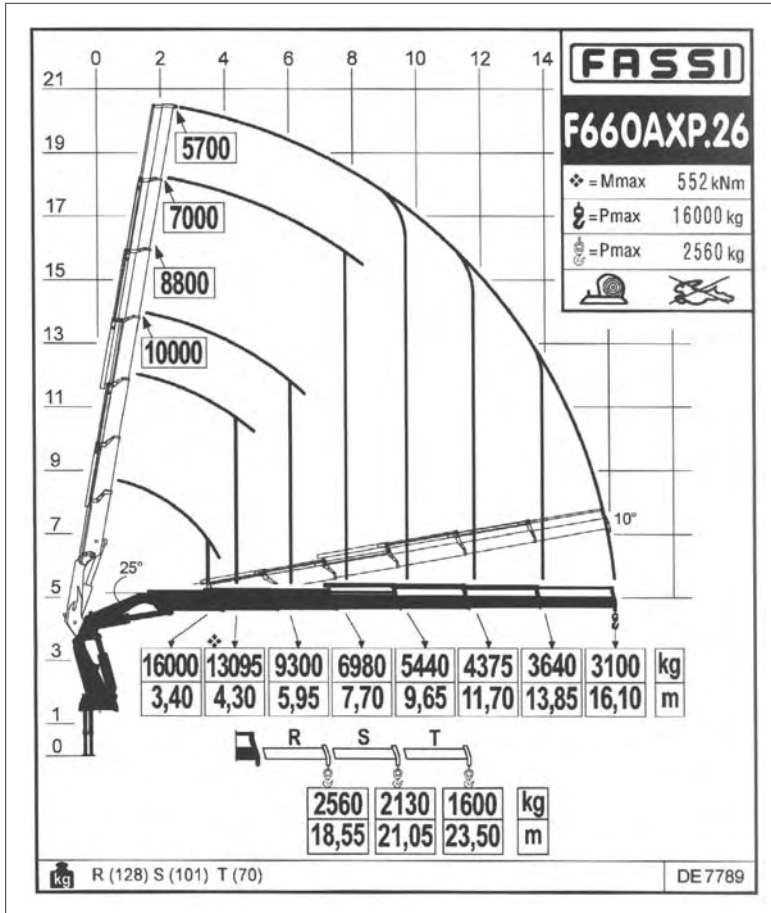
LORRY LOADER DUTIES (INCLUDING WINCH)

Transport Lorry Loader 1/2



SCANIA 8X4 RIGID + FASSI S6600A CRANE + DRAG TRAILER

LORRY LOADER DUTIES (HOOK)



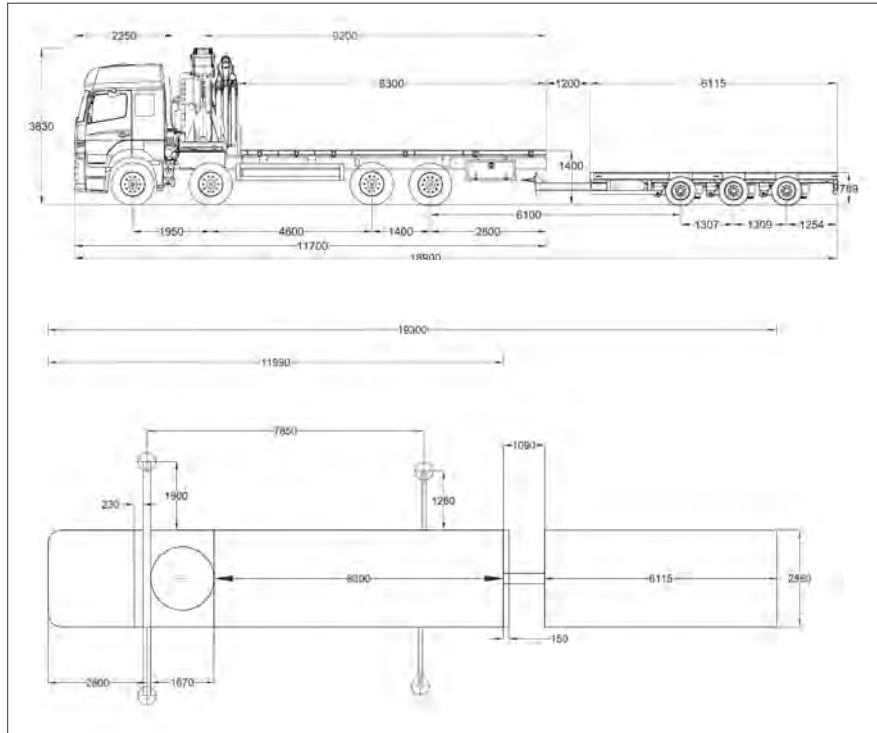
Transport Lorry Loader 1/2



The charts that have been included have been reproduced from manufacturer specifications, and while every effort has been made to ensure their accuracy, we do not accept any responsibility for errors or omissions. We also need to draw your attention to the guidance notes on page iv to assist you with your crane selection.

SCANIA 8X4 RIGID + PALFINGER 35000B CRANE + DRAG TRAILER

DIMENSIONS



TECHNICAL SPECIFICATION

Max. lifting capacity	25358lbs	112.8 kN/11500kg	at 9'2" 2.80m
Max. hydraulic outreach			62'8" 19.1m
Slewing angle			400 ° continuous
Stabilizer spread			19'8" 6.0m

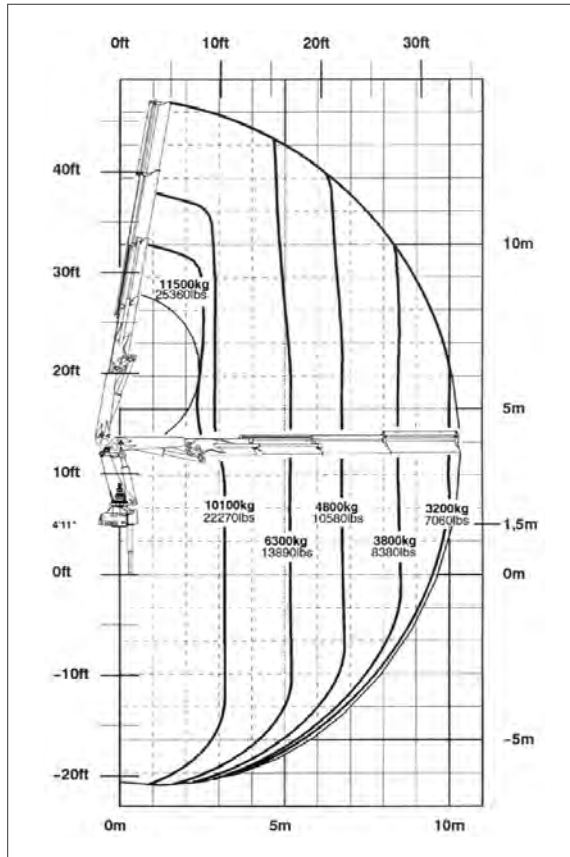
	Solo	with Drag Trailer
Vehicle weight	17,750kg	22,170kg
Max payload	14,000kg	21,830kg



The charts that have been included have been reproduced from manufacturer specifications, and while every effort has been made to ensure their accuracy, we do not accept any responsibility for errors or omissions. We also need to draw your attention to the guidance notes on page iv to assist you with your crane selection.

SCANIA 8X4 RIGID + PALFINGER 35000B CRANE + DRAG TRAILER

LORRY LOADER DUTIES (HOOK)



MAX. LIFTING CAPACITIES

Outreach	Capacity	Outreach	Capacity
Hydraulic			
4.3m	7600kg	14' 1"	16758lbs
6.1m	5310kg	20'	11708lbs
8.1m	3960kg	26' 7"	8732lbs
10.2m	3960kg	33' 6"	6923lbs

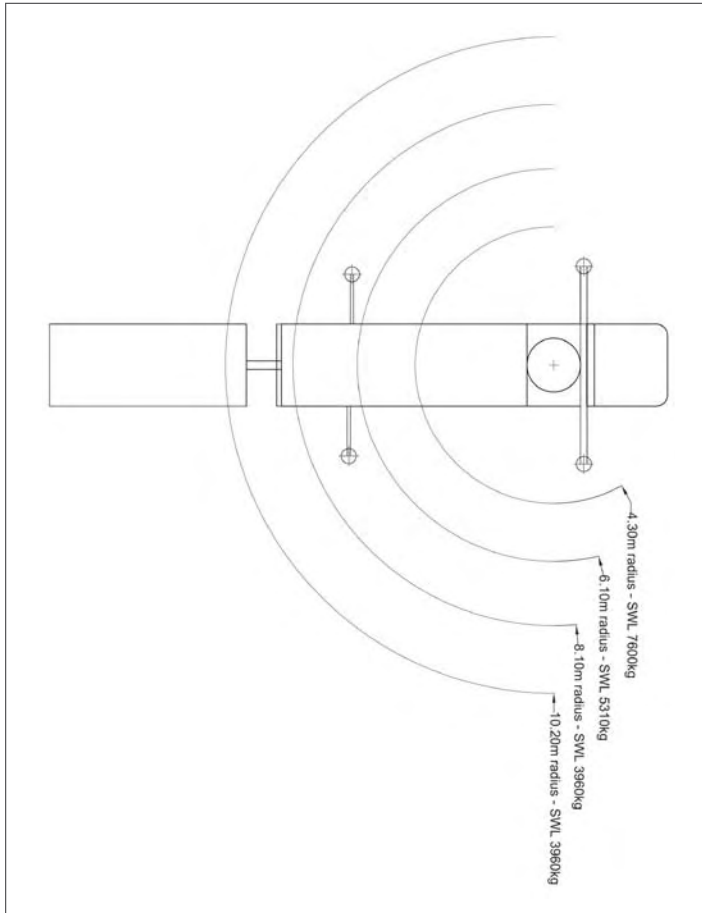


The charts that have been included have been reproduced from manufacturer specifications, and while every effort has been made to ensure their accuracy, we do not accept any responsibility for errors or omissions. We also need to draw your attention to the guidance notes on page iv to assist you with your crane selection.

SCANIA 8X4 RIGID + PALFINGER 35000B CRANE + DRAG TRAILER

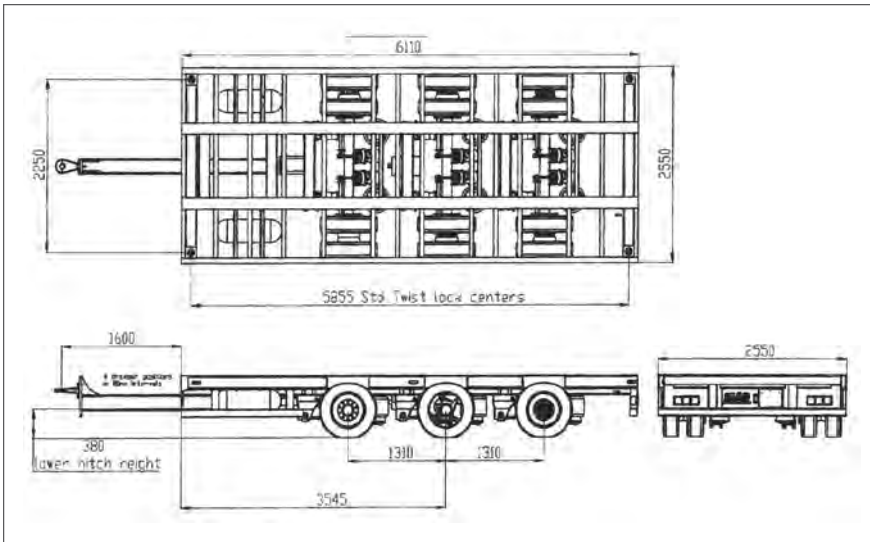
LORRY LOADER DUTIES (HOOK)

Transport Lorry Loader 3



TRI-AXLE DRAG TRAILER

DIMENSIONS



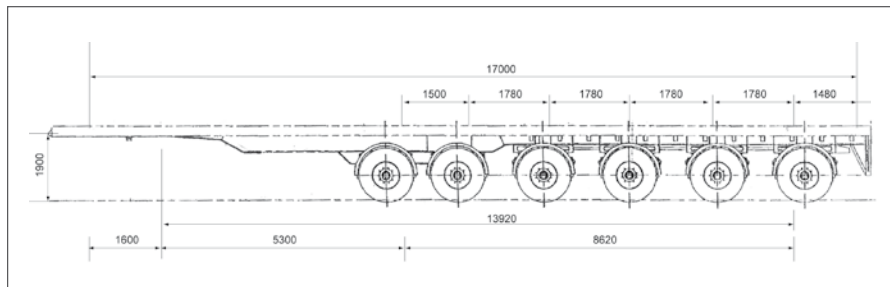
Vehicle weight	4420kg
Max payload (design)	25,000kg

Trailer 1
Transport

KING FLAT PLATFORM BALLAST 6 AXLE TRAILER

DIMENSIONS

Flat Platform Ballast Trailers 6 Axles



TECHNICAL SPECIFICATION

Overall length	17000mm
Overall width	2550mm
King pin	1900mm

Vehicle weight	17800kg
----------------	---------

Payload Subject to Unit

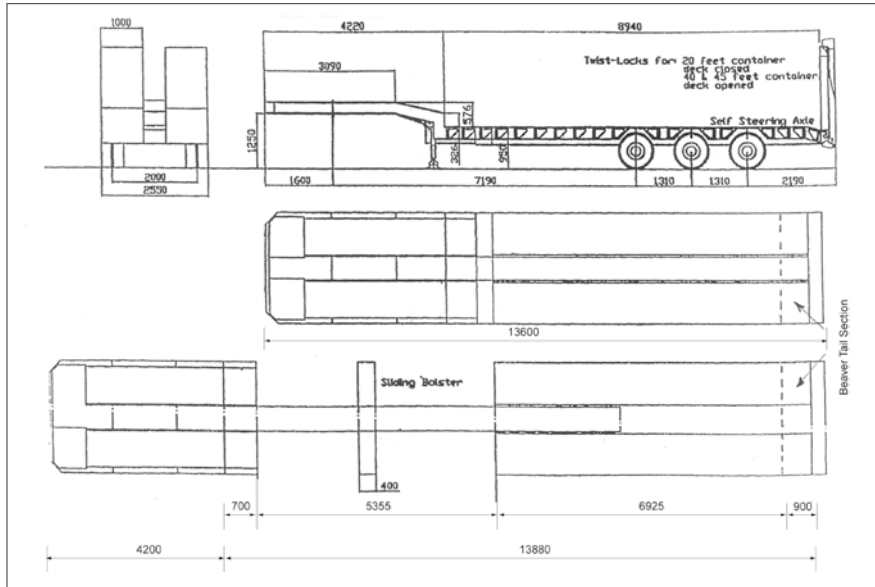
Trailer 2

Transport

ARB EXTENDABLE TRI-AXLE SEMI LOW-LOADER

DIMENSIONS

Extendable Tri-axle Semi Low-Loader



TECHNICAL SPECIFICATION

Overall length	13600 - 18080mm
Overall width	2550mm
King pin	1250mm

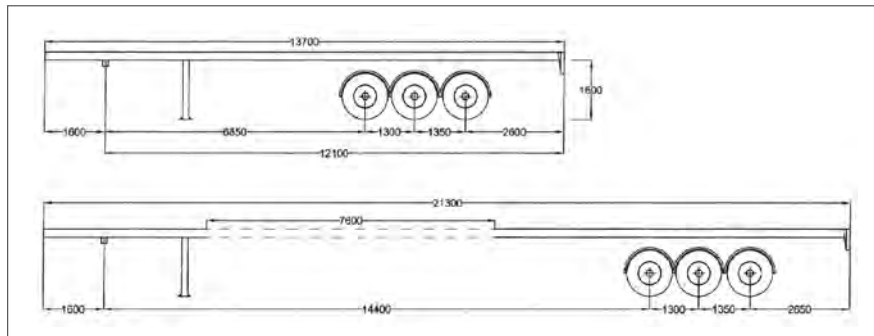
Trailer weight	13,700kg
----------------	----------

Payload Subject to Unit

45/70 EXTENDABLE TRAILER

DIMENSIONS

Flat Bed Trailer Extendable



TECHNICAL SPECIFICATION

Overall length	13,700 - 21,300mm
Overall width	2,560mm
King pin	1,500mm

Trailer weight	7920kg
----------------	--------

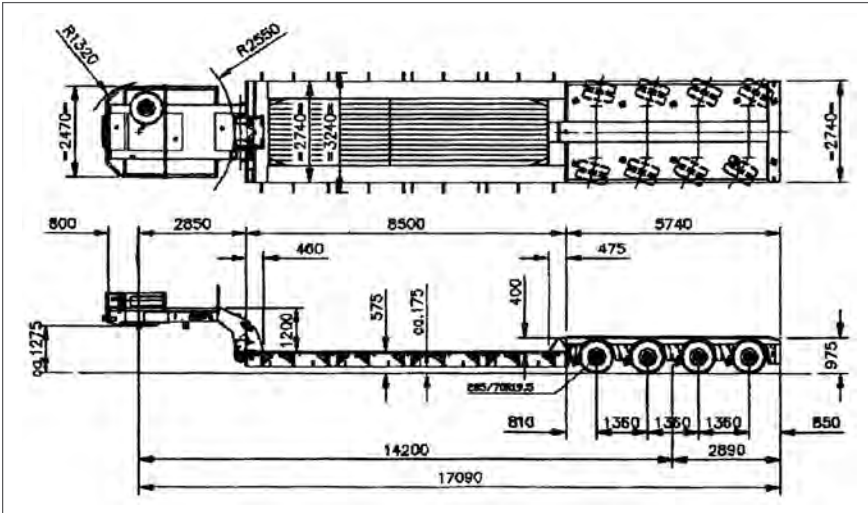
Payload Subject to Unit

Trailer 4

Transport

NOOTEBOOM LOW LOADER

DIMENSIONS



TECHNICAL SPECIFICATION

Overall length	17890mm
Overall width	2470mm
King pin	1275mm

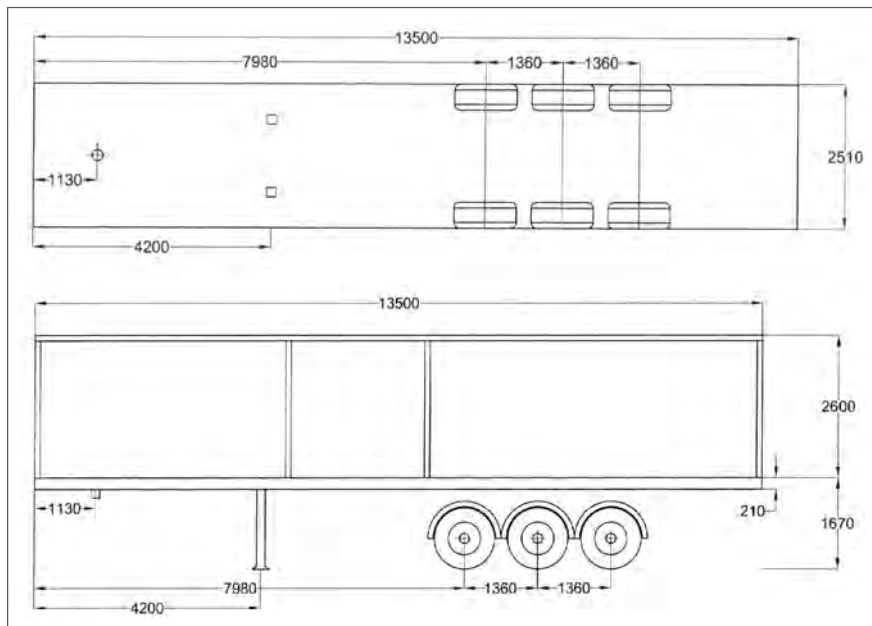
Trailer weight	22,000kg
----------------	----------

Payload Subject to Unit

Trailer 5
Transport

TAUTLINER

DIMENSIONS



TECHNICAL SPECIFICATION

Overall length	1350mm
Overall width	2510mm
King pin	1670mm

Trailer weight	7800kg
----------------	--------

Payload Subject to Unit

Trailer 6
Transport



KING LIFTING

HEAD OFFICE: King Road Avenue, Avonmouth, Bristol BS11 9HF
Tel: 01179 821121 Fax: 01179 826244 Web: www.kinglifting.co.uk