



**KING LIFTING**

Tel: 0117 982 1121  
[www.kinglifting.co.uk](http://www.kinglifting.co.uk)



# **SPECIFICATION GUIDE**

***'BIG ENOUGH TO COPE, SMALL ENOUGH TO CARE'***

# INTRODUCTION

**AFTER NEARLY 3 DECADES OF PROVIDING EXCELLENT SERVICE AND VALUE FOR MONEY, KING LIFTING IS TODAY THE LEADING CRANE HIRE, HEAVY LIFT, MACHINERY MOVEMENT AND TRANSPORT SPECIALIST IN THE UNITED KINGDOM.**

Operating an extensive and modern fleet of vehicles & equipment from a network of depots across the UK, has always allowed King Lifting to meet and exceed customers expectations. The fleet includes all-terrain and city class cranes, mobile and pedestrian operated tower cranes together with semi low & low loaders, flatbed vehicles fitted with lorry loaders and highly specialised plant & machinery movement equipment.



The accreditation of our Quality Management System to BS EN ISO 9001:2001 is not only a sign of the company's effectiveness but is a guarantee of consistently high standards of service.



King Lifting as an Environmentally Friendly company operate an Environment Management System which complies to the requirements of BS EN ISO 14001:2004.

We are members of the Construction Plant-hire Association Freight Transport Association are a CPCS Construction Plant Competence Scheme accredited Test Centre and maintain both internal and external consultants to assist with all aspects of Health and Safety, Environmental and Employment Law.

At King Lifting we are totally committed to ensuring the safety of our customers, employees and the public. We continue to promote a safety culture and invest in the highest levels of training and equipment for all our employees.

If you choose to undertake the lifting operations on a CPA Crane Hire only basis, 'BS 7121 - Safe Use of Cranes' and recommendations from the Health and Safety Executive place the responsibility of providing a suitably qualified and experienced Appointed Person on the customer. The Appointed Person is responsible for planning the lift and preparing the necessary method statement and risk assessments prior to the commencement of the lifting operation.

In this high risk industry King Lifting recommend that customers who are not experienced in hiring cranes and therefore not aware of the responsibilities, duties and risks involved, take advantage of our CPA Contract Lift service.





**KING LIFTING**

# DEPOTS



## BRISTOL DEPOT

Third Way, Avonmouth,  
Bristol, BS11 9YL  
T: 01179 821121 F: 01179 235762



## NORTHAMPTON DEPOT

Cavalry Hill, Cavalry Hill Industrial Park,  
Weedon, Northampton, NN7 4PP  
T: 01327 342180 F: 01327 342764



## SOUTHAMPTON DEPOT

Unit G3, Oceanic Way, Marchwood Industrial  
Park, Marchwood, Southampton, SO40 4BD  
T: 02380 661384 F: 02380 661494



## SOUTH WALES DEPOT

Tir-y-berth Industrial Est, Tir-y-berth,  
Hengoed, Mid Glamorgan, CF82 8AU  
T: 01443 812457 F: 01443 814143



## SWINDON DEPOT

Darby Close, Cheney Manor Industrial Est,  
Swindon, SN2 2PN  
T: 01793 542740 F: 01793 514837



## WEST LONDON DEPOT

Stockley Farm Road, Stockley Park,  
West Drayton, UB7 9BW  
T: 01895 446443 F: 01895 446449



## EAST LONDON DEPOT

Albion Parade, Canal Basin, Gravesend,  
Kent, DA12 2RN  
T: 01474 321721 F: 01474 321821



## YEovil DEPOT

Westlands, Lysander Road, Yeovil, BA20 2YB  
T: 07778 879606 F: 01935 704843



**'BIG ENOUGH TO COPE, SMALL ENOUGH TO CARE'**

**KING LIFTING LIMITED**

HEAD OFFICE: King Road Avenue Avonmouth Bristol BS11 9HF  
Tel: 01179 821121 Fax: 01179 826244 Web: [www.kinglifting.co.uk](http://www.kinglifting.co.uk)

**DEPOTS ACROSS THE UK**

# CAUTION

**UNLESS YOU UNDERSTAND  
THE REQUIREMENTS  
CONTAINED IN THIS  
GUIDE, WE WOULD  
RECOMMEND  
YOU CHOOSE A  
CONTRACT LIFT.**



## DISCLAIMER

**The configurations and duties for the cranes included in this specification are too numerous to include fully. The charts that have been included have been reproduced from manufacturer specifications, and while every effort has been made to ensure their accuracy, we do not accept any responsibility for errors or omissions.**

We also need to draw your attention to the guidance notes to assist you with your crane selection.

All aspects of this document are for guidance purposes only.

If you have any queries regarding the content or you require more extensive specifications please contact your nearest depot or alternatively the **technical department on 0117 982 1121.**

# CONTENTS

## INTRODUCTION

## CONTENTS

## TRANSPORT

The Quick Guide to Notification attendant and Marker Requirements

<b>CAPACITY</b>	<b>TRANSPORT</b>
Man 150t	Man TGX33 480 6x4 Heavy Haulage Tractor
Scania 150t	Scania R164 6x4 Heavy Haulage Tractor
Scania 55t	Scania 6x4 Heavy Haulage Tractor
Lorry Loader 1/2	Scania 8x4 Rigid + Fassi S6600A Crane + Drag Trailer
Lorry Loader 3	Scania 8x4 Rigid + Palfinger 35000B Crane + Drag Trailer
Trailer 1	Tri-axle Drag Trailer
Trailer 2	King Flat Platform Ballast 6 axle Trailer
Trailer 3	ARB Extendable Tri-axle Semi Low-Loader
Trailer 4	45/70 Extendable Trailer
Trailer 5	Nooteboom Low Loader
Trailer 6	Tautliner



**KING LIFTING**

# TRANSPORT

King Lifting Limited is one of the country's leading companies specialising in Crane Hire, Machinery Installation and Removal and Transport.

Our Low loader, Semi-low loader and flat bed vehicles, together with our fleet of lorry loader cranes are all operated by trained and fully competent personnel. We can lift, shift and transport your loads to any part of the UK or Europe, safety and securely.



Abnormal loads



Lorry loaders to 16t capacity



Low loaders to 150t capacity



Tautliner transport



**'BIG ENOUGH TO COPE, SMALL ENOUGH TO CARE'**

**KING LIFTING LIMITED**

HEAD OFFICE: King Road Avenue Avonmouth Bristol BS11 9HF  
Tel: 01179 821121 Fax: 01179 826244 Web: [www.kinglifting.co.uk](http://www.kinglifting.co.uk)

**DEPOTS ACROSS THE UK**

# THE QUICK GUIDE TO NOTIFICATION ATTENDANT & MARKER REQUIREMENTS

MEASUREMENTS	NOTIFY POLICE	NOTIFY HIGHWAYS	ATTENDANT	MARKERS
<b>WIDTH</b>				
OVER 2.9m (9' 6")	YES	NO	NO	YES
OVER 305mm (1' 00") either side of Vehicle (See Note 2)	YES	NO	NO	YES
OVER 3.5m (11' 6")	YES	NO	YES	YES
OVER 5m (16' 5") VR1 required from DOT	YES	NO	YES	YES
OVER 6.1m (20' 0") Special Order required from DOT	YES	NO	YES	YES
<b>LENGTH</b>				
OVER 18.65M (61' 2") Rigid STGO 18.3m Rigid (See Note 4)	YES	NO	YES	NO
OVER 27.4m (89' 10 1/4") Rigid Special Order required from DOT	YES	NO	YES	NO
COMBINATION OVER 25.9m (84' 11 1/4") Tractor and Trailer(s)	YES	NO	YES	NO
<b>PROJECTIONS - REAR</b>				
OVER 1m (3' 3")	NO	NO	NO	NO (Make clearly visible)
OVER 2m (6' 6")	NO	NO	NO	YES (End)
OVER 3.05m (10' 0")	YES	NO	YES	YES (End and side)
OVER 5m (16' 5") Markers not more than 3.5m (11' 6") apart	YES	NO	YES	YES (End and both sides)
<b>PROJECTIONS - FRONT</b>				
OVER 2m (6' 6")	NO	NO	YES	YES (End and side)
OVER 3.05m (10' 0")	YES	NO	YES	YES (End and side)
OVER 4.5m (14' 9")	YES	NO	YES	YES (End and both sides)
<b>WIDTH</b>				
OVER C & U 10,170kgs (Axle)	NO	YES	NO	N/A
OVER 41,000kgs (See Note 6)	NO	YES	NO	N/A
OVER 41,000kgs but not over 46,000kgs (CAT 1)	NO	YES	NO	N/A
OVER 46,000kgs but not over 80,000kgs (CAT 2) maximum axle weight 12,500kgs (See Note 5)	NO	YES	NO	(1) 40MPH (2) 35MPH
OVER 80,000kgs but not over 150,000kgs (CAT 3)	YES	YES	NO	(1) 30MPH (2) 25MPH (3) 20MPH (4) 12MPH
OVER 150,000kgs at CAT 3 but Special Order required from DOT	YES	YES	NO	VARIOUS
<b>MAXIMUM SPEED</b>				



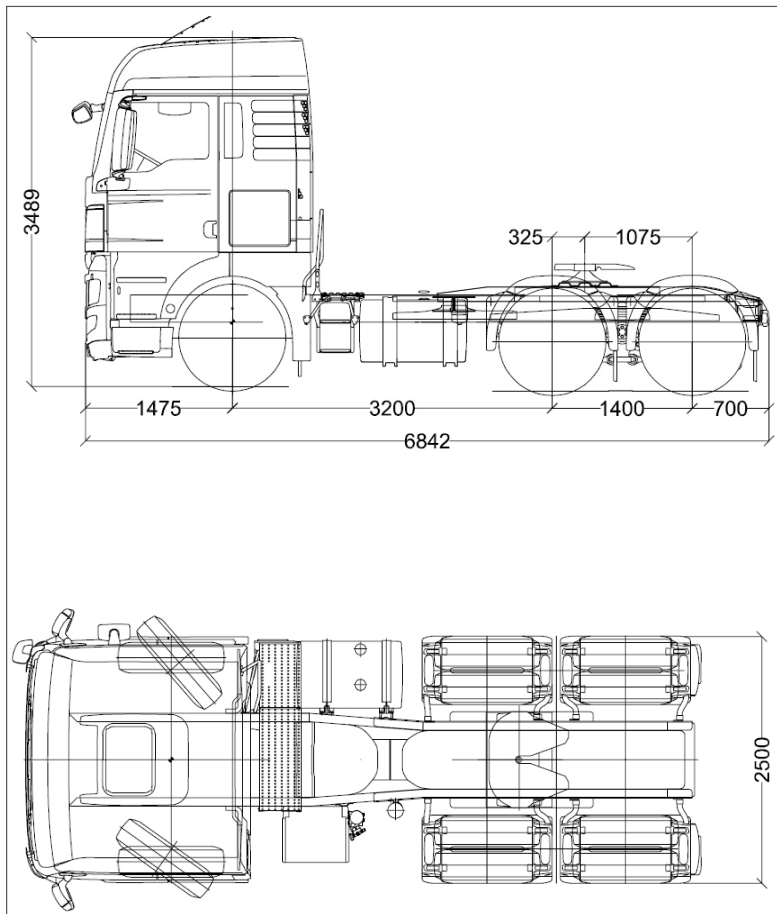
# MAN TGX 33 480 6X4 BB HEAVY HAULAGE TRACTOR

## DIMENSIONS

150000kg GTW Heavy Haulage Tractor

150 Tonne

Transport



## TECHNICAL SPECIFICATION

Vehicle weight	10660KGS
----------------	----------



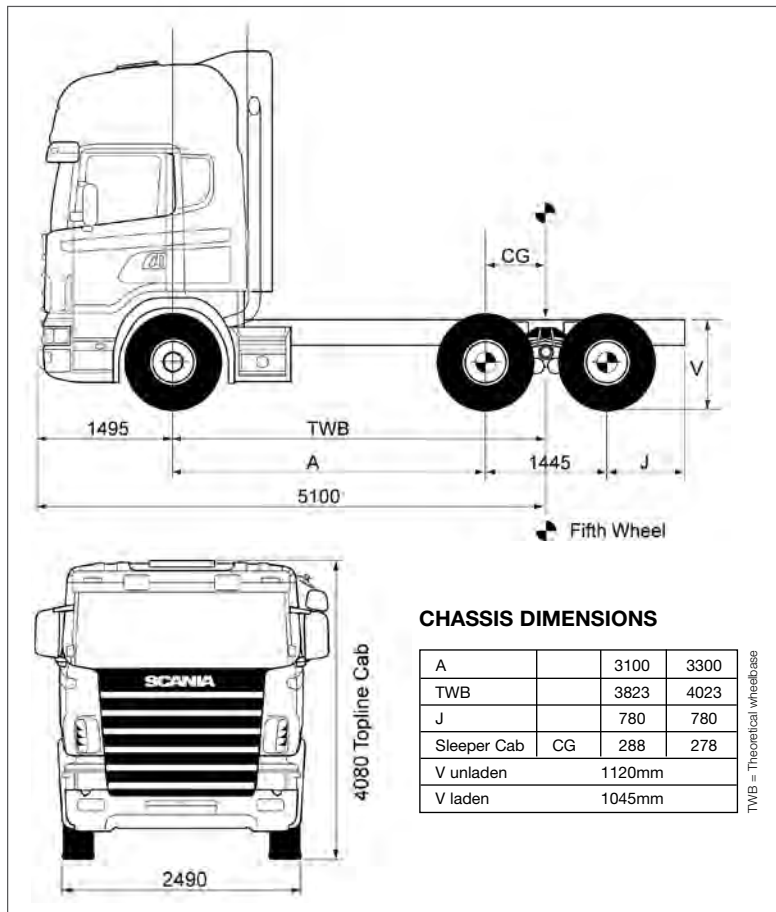
The charts that have been included have been reproduced from manufacturer specifications, and while every effort has been made to ensure their accuracy, we do not accept any responsibility for errors or omissions. We also need to draw your attention to the guidance notes on page iv to assist you with your crane selection.

# SCANIA R164 6X4 HEAVY HAULAGE TRACTOR

## DIMENSIONS

150000kg GTW Heavy Haulage Tractor

150 Tonne  
Transport



## TECHNICAL SPECIFICATION

Vehicle weight	11,460kg
----------------	----------

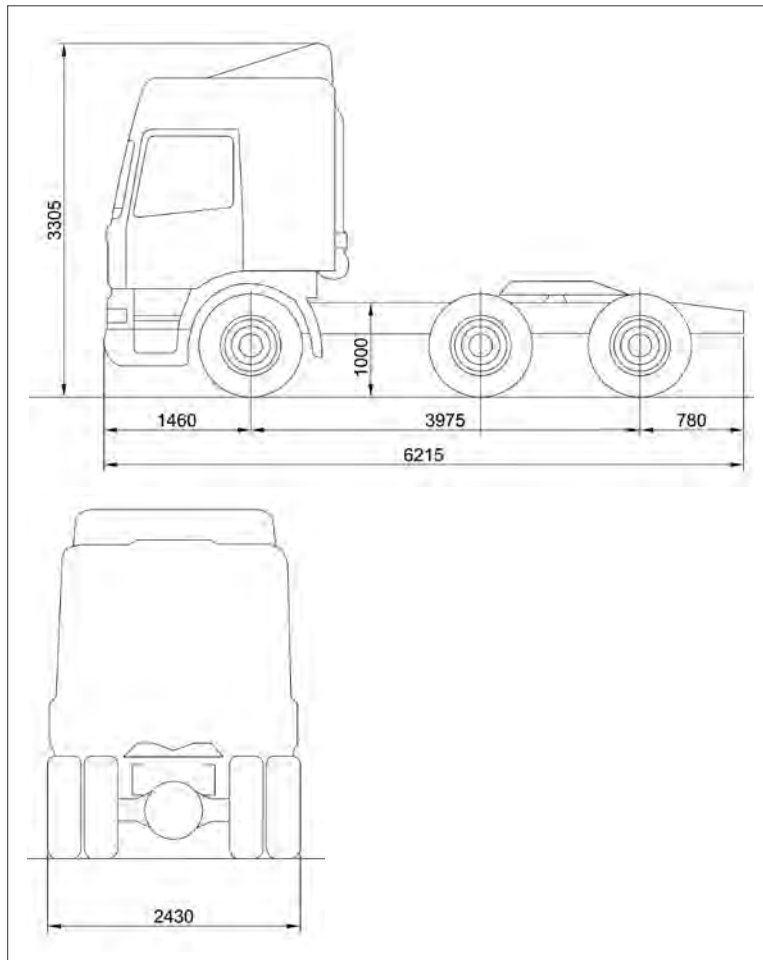


The charts that have been included have been reproduced from manufacturer specifications, and while every effort has been made to ensure their accuracy, we do not accept any responsibility for errors or omissions. We also need to draw your attention to the guidance notes on page iv to assist you with your crane selection.

# SCANIA 6X4 HEAVY HAULAGE TRACTOR

## DIMENSIONS

55000kg GTW Heavy Haulage Tractor



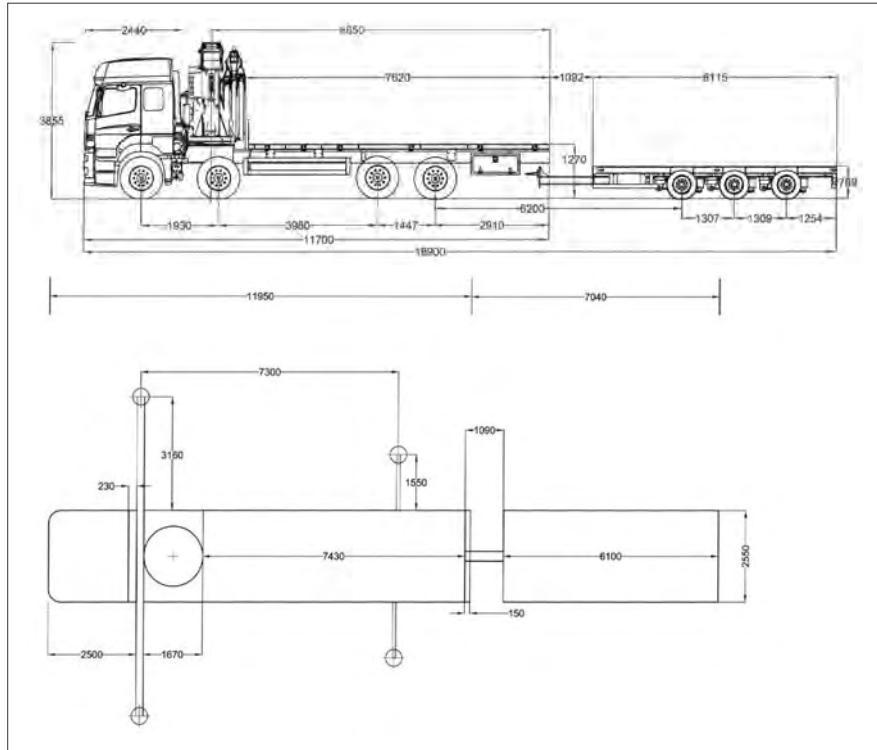
55 Tonne  
Transport

## TECHNICAL SPECIFICATION

Vehicle weight	8,520kg
----------------	---------

# SCANIA 8X4 RIGID + FASSI S6600A CRANE + DRAG TRAILER

## DIMENSIONS



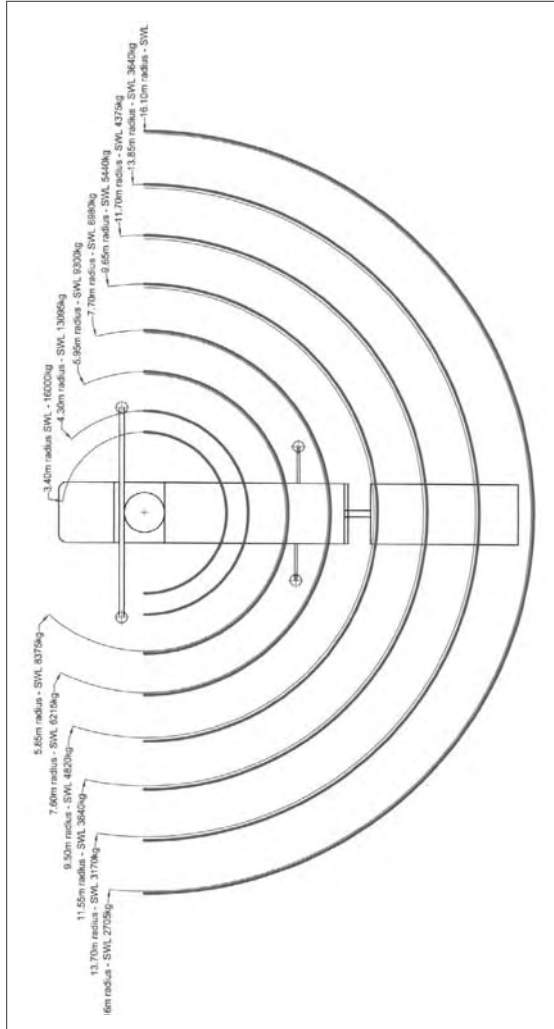
## TECHNICAL SPECIFICATION

Max. lifting capacity	16000kg @ 3.4m	3100kg @ 16.1m
Max. hydraulic outreach		16.1m
Slewing angle		400 ° continuous
Stabilizer spread		8880mm

	Solo	with Drag Trailer
Vehicle weight	21,780kg	26,200kg
Max payload	10,220kg	17,800kg

# SCANIA 8X4 RIGID + FASSI S6600A CRANE + DRAG TRAILER

## LORRY LOADER DUTIES (INCLUDING WINCH)

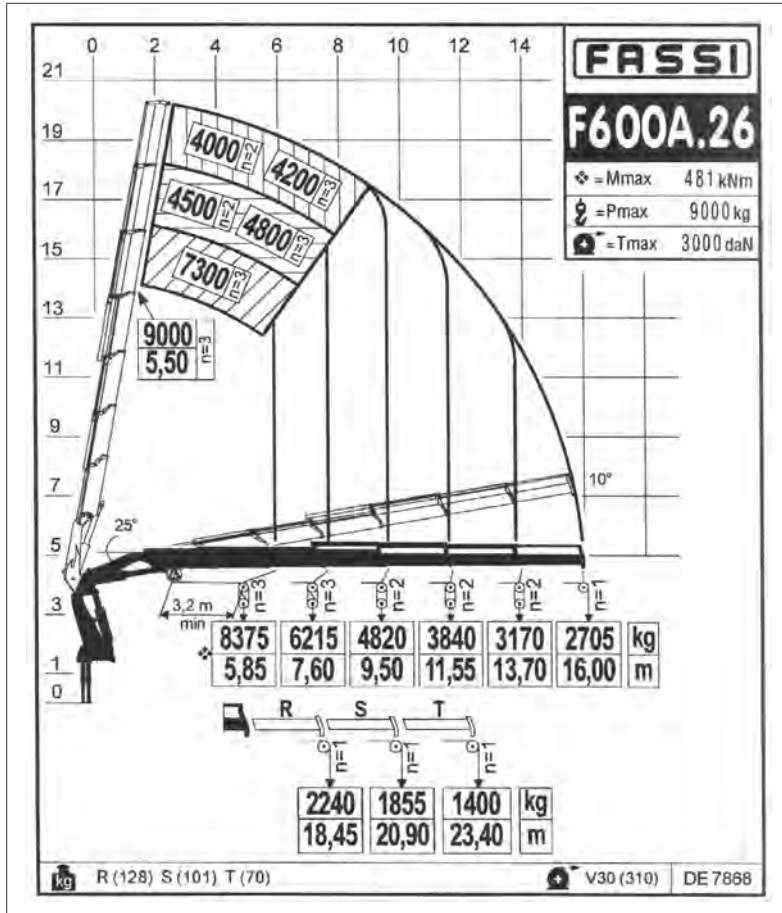


The charts that have been included have been reproduced from manufacturer specifications, and while every effort has been made to ensure their accuracy, we do not accept any responsibility for errors or omissions. We also need to draw your attention to the guidance notes on page iv to assist you with your crane selection.

# SCANIA 8X4 RIGID + FASSI S6600A CRANE + DRAG TRAILER

## LORRY LOADER DUTIES (INCLUDING WINCH)

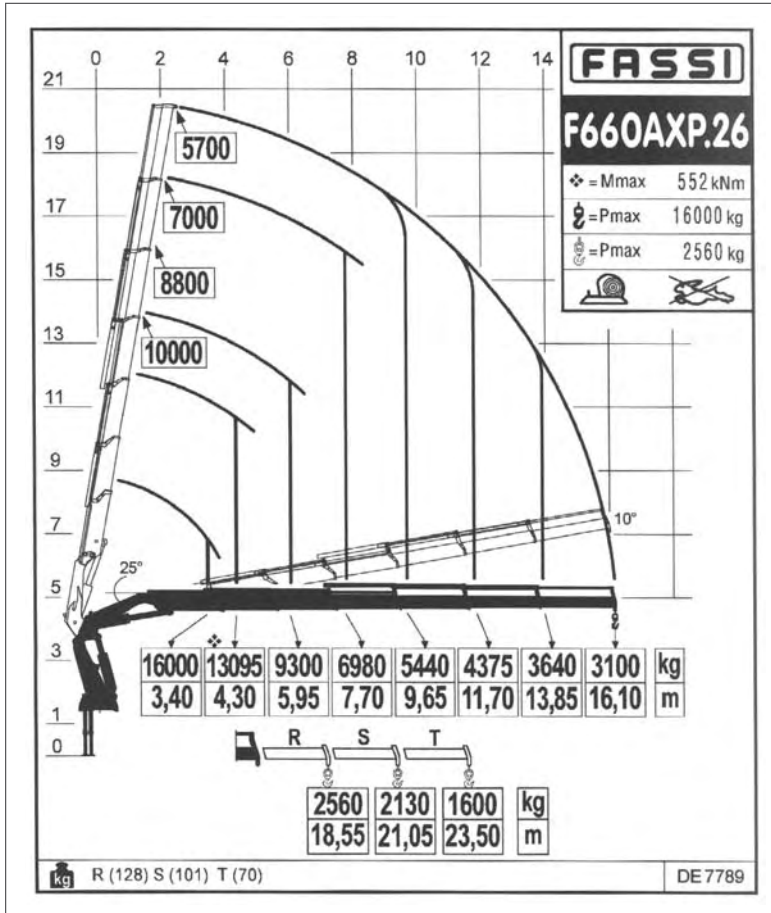
Transport Lorry Loader 1/2



The charts that have been included have been reproduced from manufacturer specifications, and while every effort has been made to ensure their accuracy, we do not accept any responsibility for errors or omissions. We also need to draw your attention to the guidance notes on page iv to assist you with your crane selection.

# SCANIA 8X4 RIGID + FASSI S6600A CRANE + DRAG TRAILER

## LORRY LOADER DUTIES (HOOK)



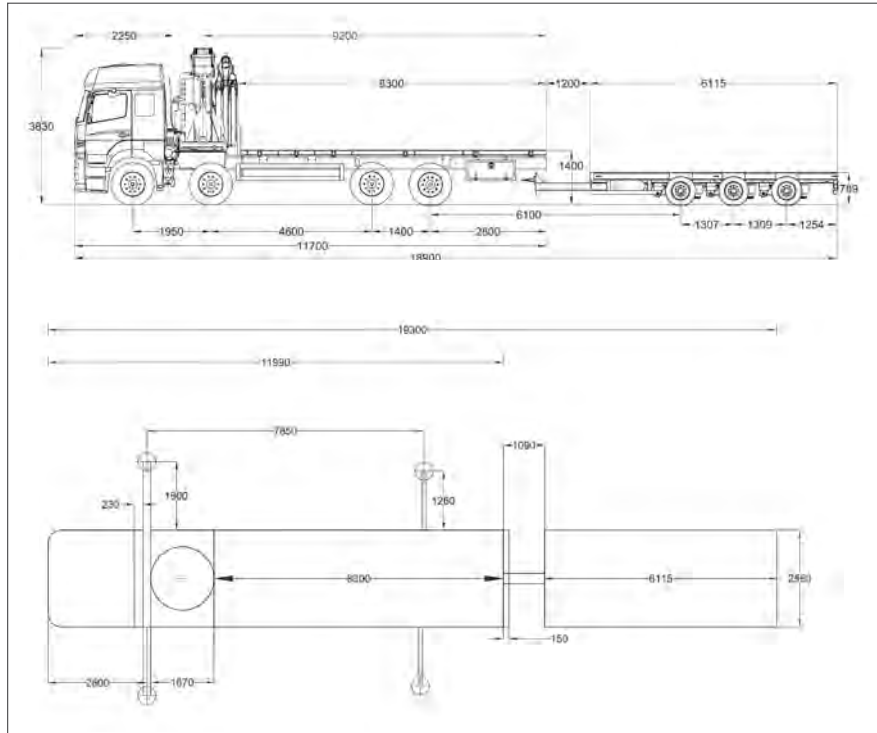
Transport Lorry Loader 1/2



The charts that have been included have been reproduced from manufacturer specifications, and while every effort has been made to ensure their accuracy, we do not accept any responsibility for errors or omissions. We also need to draw your attention to the guidance notes on page iv to assist you with your crane selection.

# SCANIA 8X4 RIGID + PALFINGER 35000B CRANE + DRAG TRAILER

## DIMENSIONS



## TECHNICAL SPECIFICATION

Max. lifting capacity	25358lbs	112.8 kN/11500kg	at 9'2" 2.80m
Max. hydraulic outreach			62'8" 19.1m
Slewing angle			400 ° continuous
Stabilizer spread			19'8" 6.0m

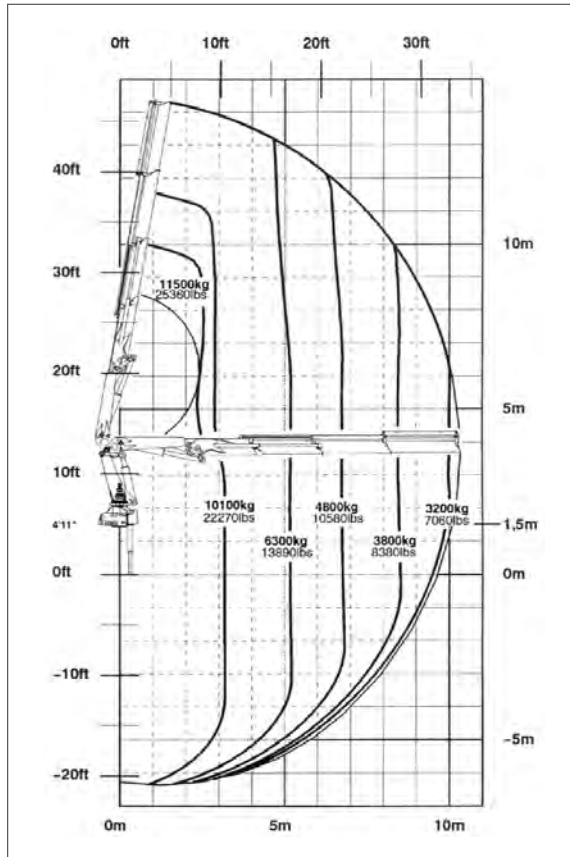
	Solo	with Drag Trailer
Vehicle weight	17,750kg	22,170kg
Max payload	14,000kg	21,830kg



The charts that have been included have been reproduced from manufacturer specifications, and while every effort has been made to ensure their accuracy, we do not accept any responsibility for errors or omissions. We also need to draw your attention to the guidance notes on page iv to assist you with your crane selection.

# SCANIA 8X4 RIGID + PALFINGER 35000B CRANE + DRAG TRAILER

## LORRY LOADER DUTIES (HOOK)



### MAX. LIFTING CAPACITIES

Outreach	Capacity	Outreach	Capacity
Hydraulic			
4.3m	7600kg	14' 1"	16758lbs
6.1m	5310kg	20'	11708lbs
8.1m	3960kg	26' 7"	8732lbs
10.2m	3960kg	33' 6"	6923lbs

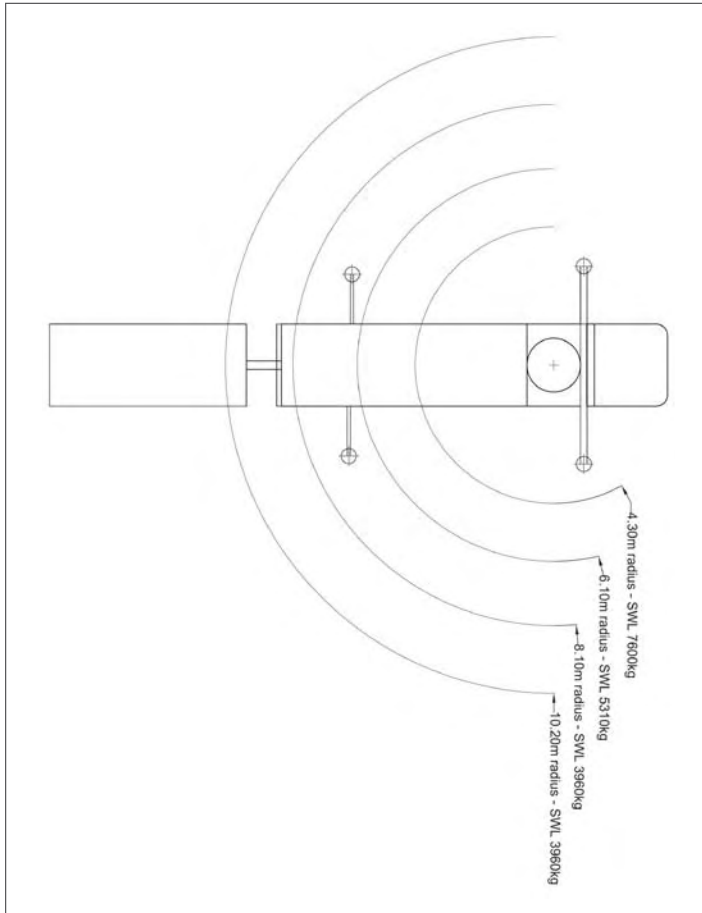


The charts that have been included have been reproduced from manufacturer specifications, and while every effort has been made to ensure their accuracy, we do not accept any responsibility for errors or omissions. We also need to draw your attention to the guidance notes on page iv to assist you with your crane selection.

# SCANIA 8X4 RIGID + PALFINGER 35000B CRANE + DRAG TRAILER

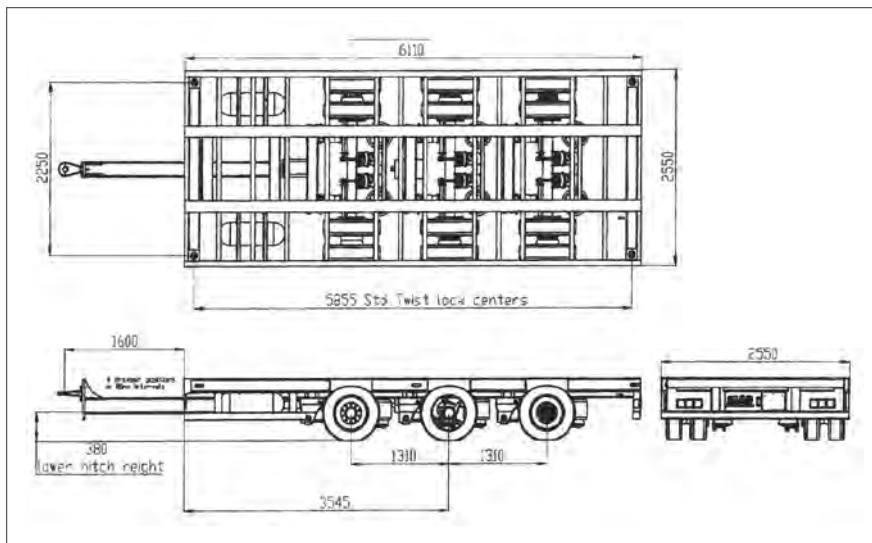
## LORRY LOADER DUTIES (HOOK)

Transport Lorry Loader 3



# TRI-AXLE DRAG TRAILER

## DIMENSIONS



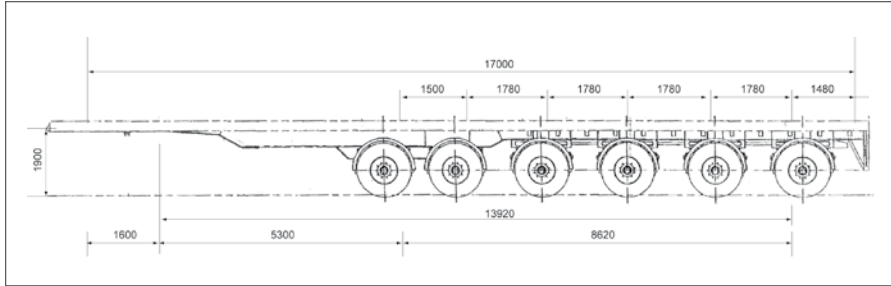
Vehicle weight	4420kg
Max payload (design)	25,000kg

Trailer 1  
Transport

# KING FLAT PLATFORM BALLAST 6 AXLE TRAILER

## DIMENSIONS

Flat Platform Ballast Trailers 6 Axles



## TECHNICAL SPECIFICATION

Overall length	17000mm
Overall width	2550mm
King pin	1900mm

Vehicle weight	17800kg
----------------	---------

Payload Subject to Unit

Trailer 2

Transport

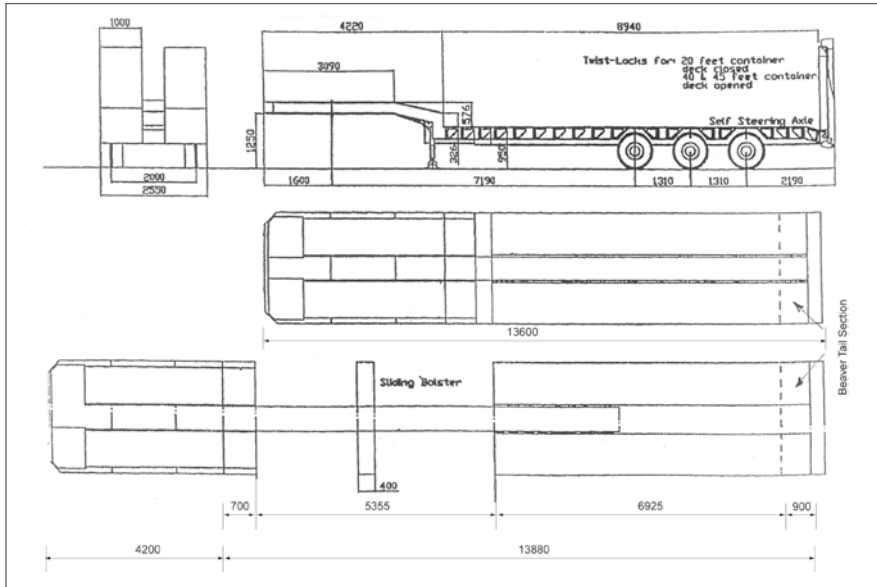


The charts that have been included have been reproduced from manufacturer specifications, and while every effort has been made to ensure their accuracy, we do not accept any responsibility for errors or omissions. We also need to draw your attention to the guidance notes on page iv to assist you with your crane selection.

# ARB EXTENDABLE TRI-AXLE SEMI LOW-LOADER

## DIMENSIONS

Extendable Tri-axle Semi Low-Loader



## TECHNICAL SPECIFICATION

Overall length	13600 - 18080mm
Overall width	2550mm
King pin	1250mm

Trailer weight	13,700kg
----------------	----------

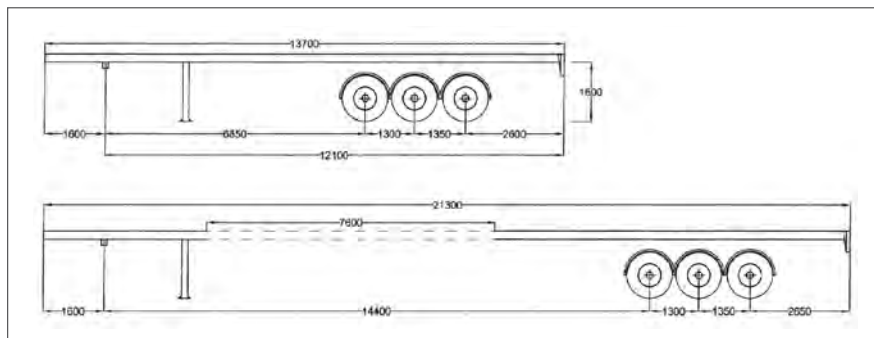
Payload Subject to Unit

Transport Trailer 3

# 45/70 EXTENDABLE TRAILER

## DIMENSIONS

Flat Bed Trailer Extendable



## TECHNICAL SPECIFICATION

Overall length	13,700 - 21,300mm
Overall width	2,560mm
King pin	1,500mm

Trailer weight	7920kg
----------------	--------

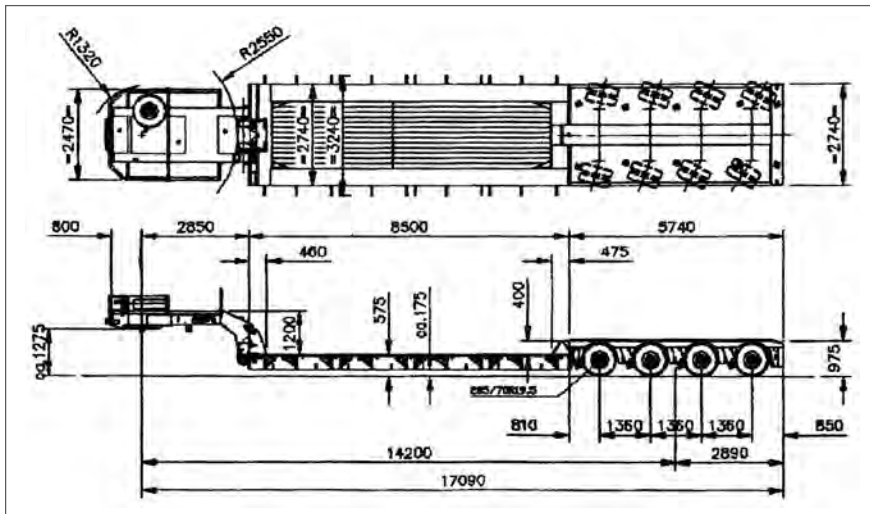
Payload Subject to Unit

Trailer 4

Transport

# NOOTEBOOM LOW LOADER

## DIMENSIONS



## TECHNICAL SPECIFICATION

Overall length	17890mm
Overall width	2470mm
King pin	1275mm

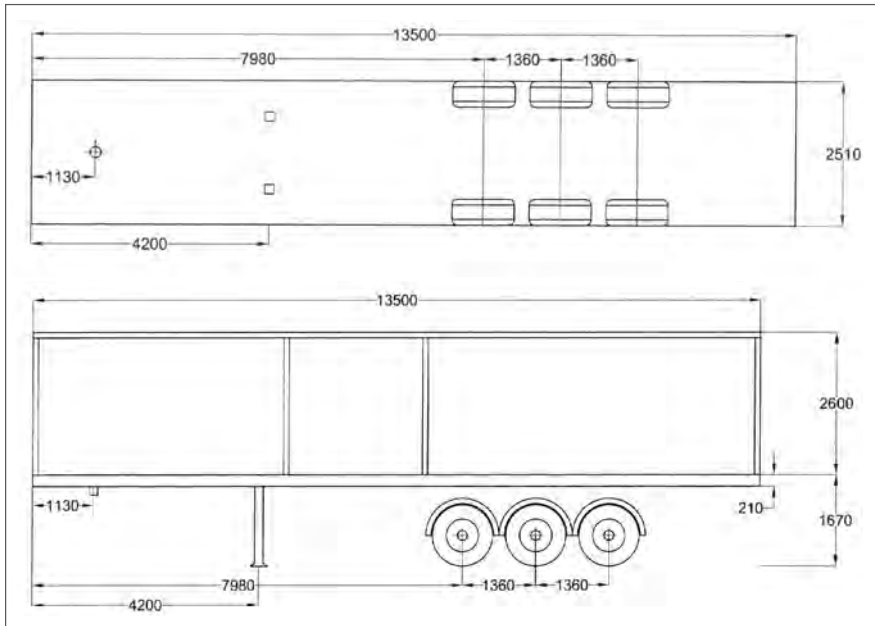
Trailer weight	22,000kg
----------------	----------

Payload Subject to Unit

Trailer 5  
Transport

# TAUTLINER

## DIMENSIONS



## TECHNICAL SPECIFICATION

Overall length	1350mm
Overall width	2510mm
King pin	1670mm

Trailer weight	7800kg
----------------	--------

Payload Subject to Unit

Trailer 6  
Transport





**KING LIFTING**

HEAD OFFICE: King Road Avenue, Avonmouth, Bristol BS11 9HF  
Tel: 01179 821121 Fax: 01179 826244 Web: [www.kinglifting.co.uk](http://www.kinglifting.co.uk)